

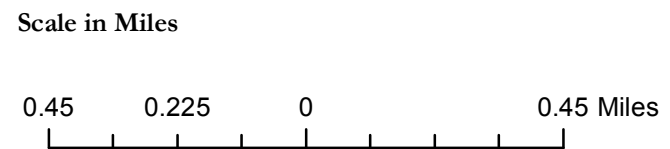
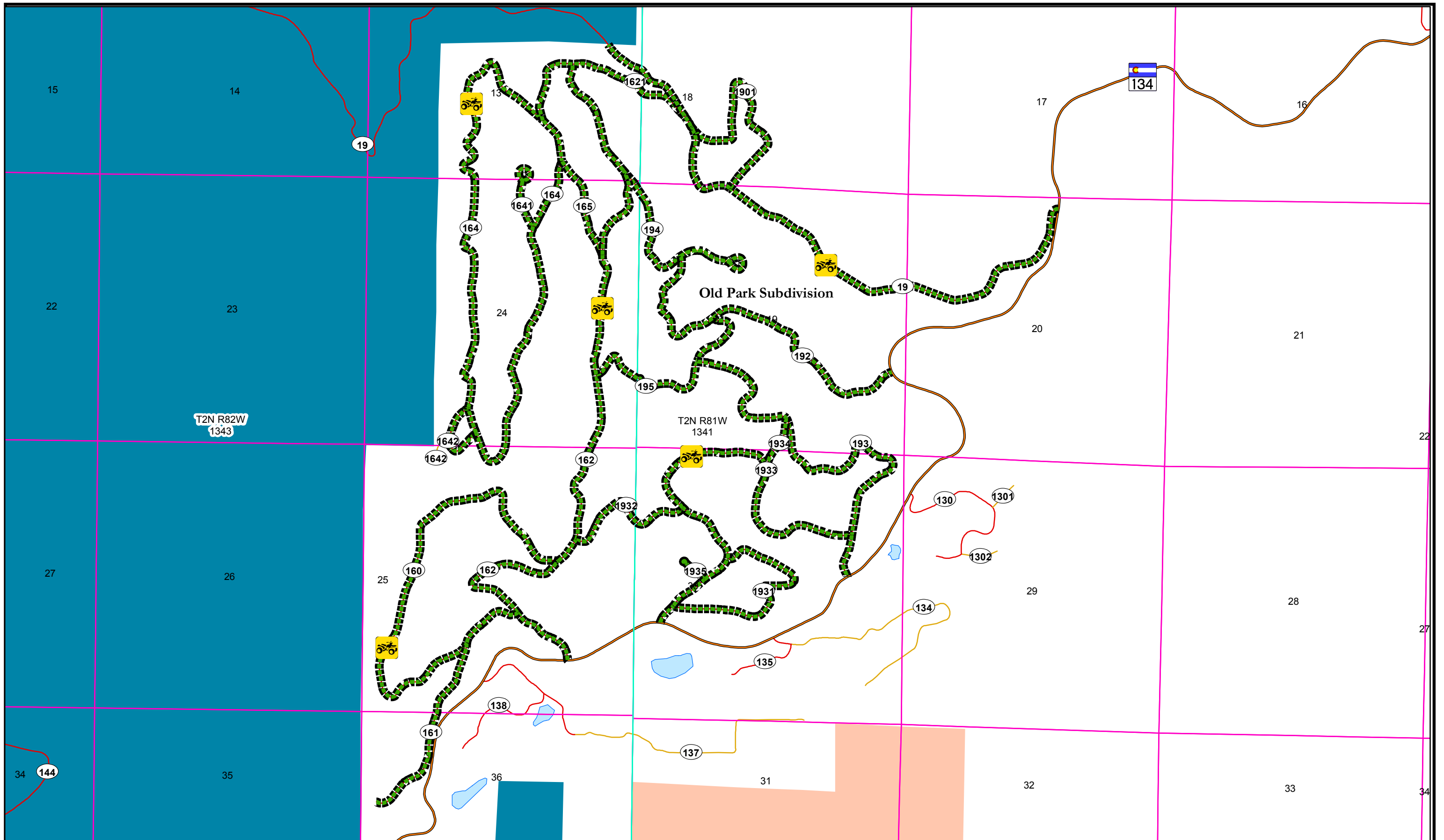
Approved April 12, 2016

**GRAND COUNTY Off Highway Vehicle (OHV) ROUTES**

**GRAND COUNTY**

	<b>ROAD #</b>	<b>DISTRICT</b>	<b>MILEAGE</b>	<b>COUNTY ROAD NAME</b>	<b>DESCRIPTION</b>
Kremmling North	25	4	7.21	Antelope Pass Road	From CR22 N. to Hwy 40
	224	4	7.23	Cow Gulch Road	From CR22 N. to CR25
	22	4	0.69	W. Troublesome Crk Rd	From Town limits N to CR224
	227	4	3.20	Skyline Drive	From Hwy 40 S.E. to End
Old Park Subdivision	160	4	1.76	Meadow Drive	From CR161 N. to CR162
	161	4	0.99	Old Pass Road	From CR162 S. to End
	162	4	2.91	Barlow Drive	From Hwy 134 N to CR1621
	1621	4	0.79	Red Dirt Rd Cutoff	From CR165 N. to CR19
	164	4	3.21	Golden Edge Drive	From CR165 N. to CR165
	1641	4	0.32	Laurium Ct.	From CR164 N. to End
	1642	4	0.30	Andromeda Ct.	From CR164 N. to CR164
	165	4	0.57	Excelsior Way	From CR164 S. to CR162
	19	4	2.38	Red Dirt Road	From Hwy 134 N. to USFS Boundary
	1901	4	0.90	Juniper Ct.	From CR19 N. to CR19
	192	4	1.36	Park Drive	From Hwy 134 N. to CR194
	193	4	1.66	Hemlock Drive	From Hwy 134 N. to CR195
	1931	4	0.89	Fariview Ct.	From CR1933 N. to CR1933
	1932	4	0.54	Spruce Drive	From CR1933 W. to CR162
	1933	4	1.79	Aspen Way	From Hwy 134 N. to CR193
	1934	4	0.20	Sunshine Drive	From CR1933 N. to CR193
	1935	4	0.13	Arapaho Ct.	From CR1933 W. to End
	194	4	0.85	Holly Way	From CR162 S. to End
195	4	0.82	Willow Drive	From CR192 W. to CR162	
HSS	20	3	5.52	Parshall Divide Road	From HSS Town Limits to Hwy 40
	559	3	0.45	Roosevelt Ave	From HSS Town Limits to End
	55	3	1.95	Cottonwood Pass Rd	From HSS Town Limits to CR555
Parshall	3	3	1.60	Ute Pass Rd	From CR3080 to USFS Boundary
GL	451	2	0.29	County Road 451	From CR4 W. to Private Property





**Map Legend**

Old_Park	Twn_Rng
County Roads	Sections
<b>STATUS</b>	<b>BUREAU OF LAND MANAGEMENT</b>
PRI	USFS
SEC	<b>Ranger District</b>
NCM	Medbow/Routt_Yampa RD
US Highway 134	Medbow/Routt_HahnsPeakBearsEars RD

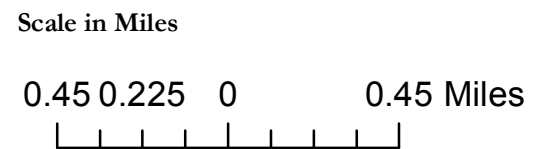
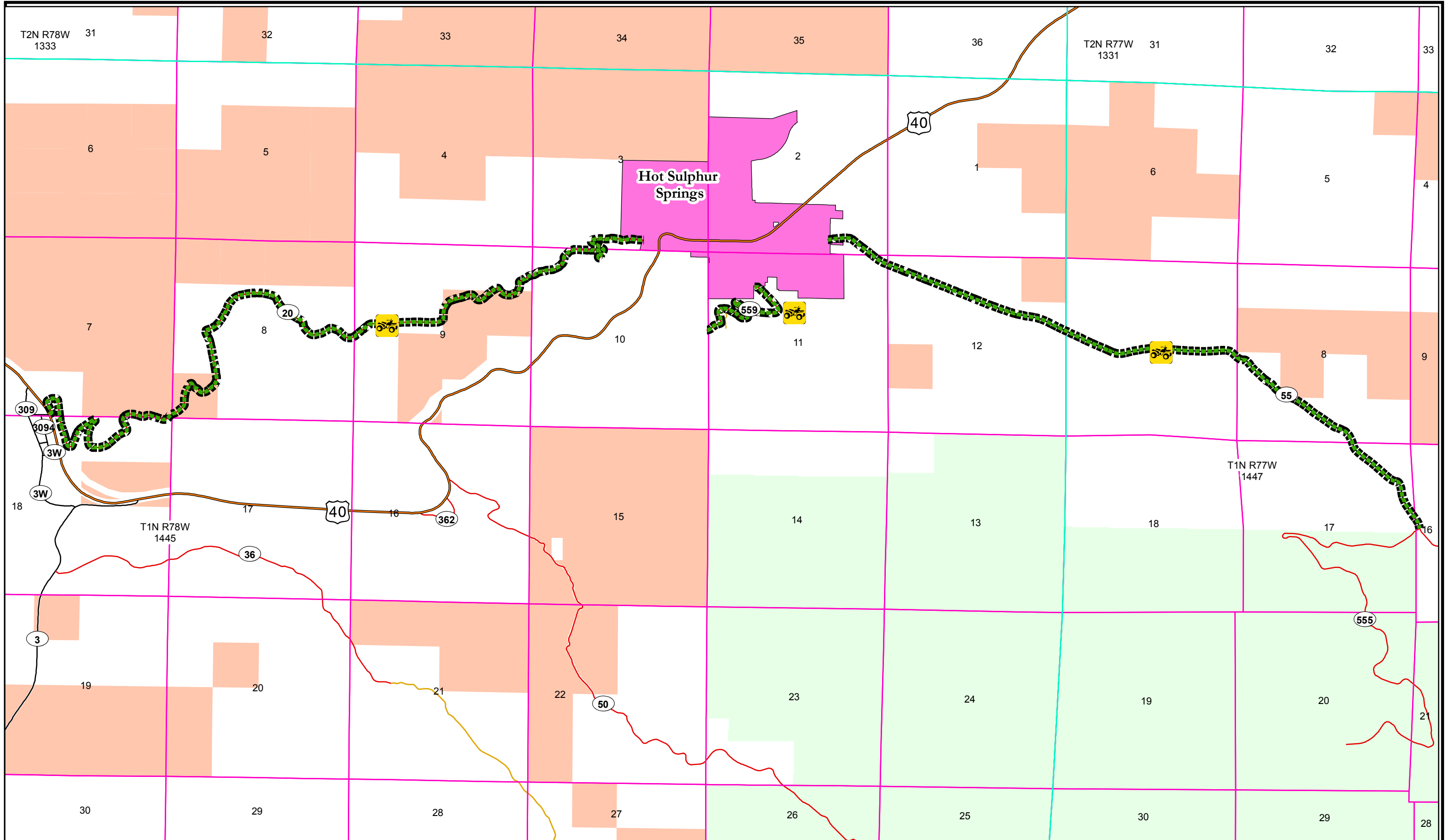


Grand County G.I.S.  
 GRAND COUNTY GOVERNMENT  
 Courthouse, 308 Square Ave., P.O. Box #264  
 Hot Sulphur Springs, CO 80451  
 Phone (970) 725-3347 Fax (970) 725-3303  
 COUNTY MAP  
 Hoppel, edited, and published by the  
 Grand  
 County Geographic Information System  
 (GCIS) Dept. Compiled from U.S. West  
 LandBase Data digitized from the Grand  
 County Assessor Parcel Base Maps.  
 Map Edited 2014 AG

**DISCLAIMER:**  
 This map is for illustrative purposes only, and  
 is not suitable for parcel specific decision  
 making. UNDER NO CIRCUMSTANCES SHALL GCIS  
 DATA BE USED FOR FINAL DESIGN PURPOSES. More  
 site-specific studies may be required to make  
 decisions and draw accurate conclusions.  
 This product has been developed for County use only.  
 The GIS database and data in the products are subject  
 to constant change. Its accuracy and completeness  
 cannot be guaranteed. GCIS makes no warranties or  
 guarantees, either expressed or implied, as to the  
 accuracy, completeness, or correctness of such products  
 nor accepts any liability arising from any inaccuracy,  
 incompleteness or misleading information contained therein.

**PROJECTION:**  
 Colorado State Plane Coordinate System  
 North Zone 3451  
 1983 North American Datum (NAD83)  
 Colorado, U.S.A.  
 The information contained herein is for personal use  
 only. Any redistribution of this information is  
 strictly prohibited without permission by the County of  
 Grand, Colorado.

Approved  
 Old Park  
 OHV Route



Map Legend			
	Hot Sulphur Springs OHV Routes		
	US Highway 40		
	Hot Sulphur Springs		
	Twn_Rng		BUREAU OF LAND MANAGEMENT
	Sections	<b>County Roads</b>	<b>USFS</b>
			PRI
			SEC
			NCM
			Arapaho/Roosevelt RD



Grand County G.I.S.  
 GRAND COUNTY GOVERNMENT  
 Courthouse, 308 Myers Ave., P.O. Box #264  
 Hot Sulphur Springs, CO 80451  
 Phone (970) 725-3347 Fax (970) 725-3303

Map Edited 2014 AG

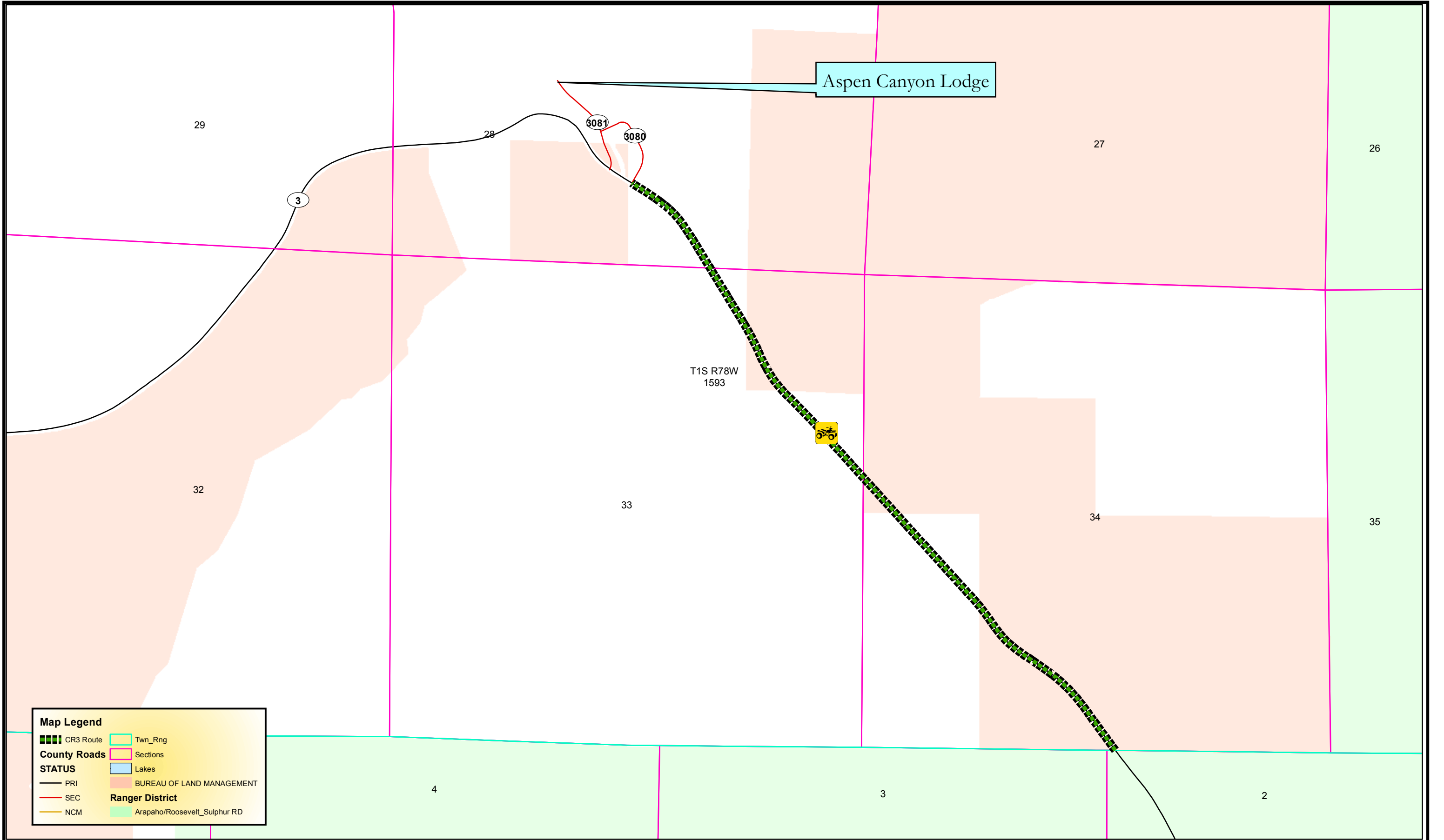
PROJECTION:  
 Colorado State Plane Coordinate System  
 North Zone 3451  
 1983 North American Datum (NAD83)

**DISCLAIMER:**  
 This map is for illustrative purposes only, and is not suitable for parcel specific decision making. UNDER NO CIRCUMSTANCES SHALL GIS DATA BE USED FOR FINAL DESIGN PURPOSES. More site-specific studies may be required to make decisions and draw accurate conclusions.

This product has been developed for County use only. The GIS database and data in the products are subject to constant change. Its accuracy and completeness cannot be guaranteed. GISIS makes no warranties or guarantees, either expressed or implied, as to the accuracy, completeness, or correctness of such products nor accepts any liability arising from any incorrect, incomplete or misleading information contained therein.

(c) Copyright 1998 by the County of Grand, Colorado, U.S.A.  
 The information contained herein is for personal use only. Any redistribution of this information is strictly prohibited without permission by the County of Grand.

Approved  
 HSS  
 OHV Route



Aspen Canyon Lodge

**Map Legend**

CR3 Route	Twn_Rng
County Roads	Sections
<b>STATUS</b>	Lakes
PRI	BUREAU OF LAND MANAGEMENT
SEC	<b>Ranger District</b>
NCM	Arapaho/Roosevelt_Sulphur RD

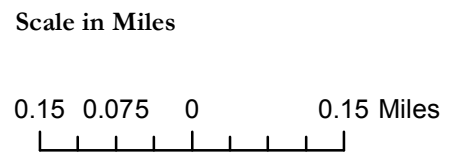


Image Data from ESRI  
 Web Mercator Auxiliary  
 Sphere (WKID 102100)  
 Aerial Photography  
 Last Updated: May 2014

Grand County G.I.S.  
 GRAND COUNTY GOVERNMENT  
 Courthouse, 308 Ryan Ave., P.O. Box #284  
 Hot Sulphur Springs, CO 80451  
 Phone (970) 725-3361 Fax (970) 725-3303

COUNTY MAP  
 Mapped, edited, and published by the  
 Grand  
 County Geographic Information System  
 (GCCIS) Dept. Compiled from U.S. West  
 Landbase Data digitized from the Grand  
 County Assessor Parcel Base Maps.  
 Map Edited 2015 AG

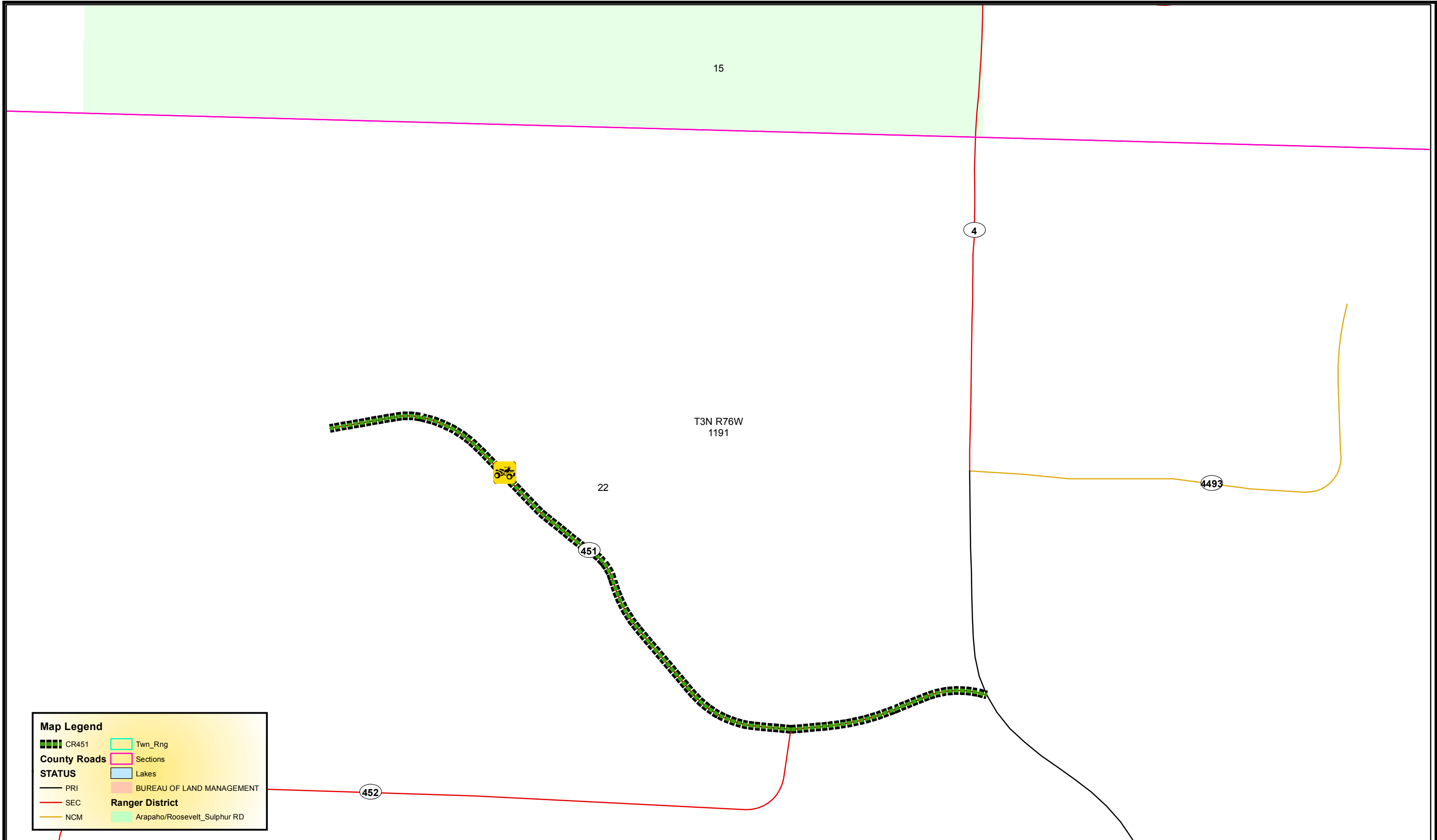
PROJECTION:  
 Colorado State Plane Coordinate System  
 North Zone 3451  
 1983 North American Datum (NAD83)

**DISCLAIMER:**  
 This map is for illustrative purposes only, and  
 is not suitable for parcel specific decision  
 making. UNDER NO CIRCUMSTANCES SHALL GCCIS  
 DATA BE USED FOR FUND DECISION PURPOSES. More  
 site-specific studies may be required to make  
 decisions and draw accurate conclusions.

This product has been developed for County use only.  
 The GIS database and data in the products are subject  
 to constant change. Its accuracy and completeness  
 cannot be guaranteed. GCCIS makes no warranties or  
 guarantees, either expressed or implied, as to the  
 accuracy, completeness, or correctness of such products  
 nor accepts any liability arising from any incorrect,  
 incomplete or misleading information contained therein.

©Copyright 1998 by the County of Grand,  
 Colorado, U.S.A.  
 The information contained herein is for personal use  
 only. Any redistribution of this information is  
 strictly prohibited without permission by the County of  
 Grand, Colorado.

Approved  
 CR3 Segment  
 OHV Route



**Map Legend**

CR451	Twn_Rng
<b>County Roads</b>	Sections
<b>STATUS</b>	Lakes
PRI	BUREAU OF LAND MANAGEMENT
SEC	<b>Ranger District</b>
NCM	Arapaho/Roosevelt_Sulphur RD

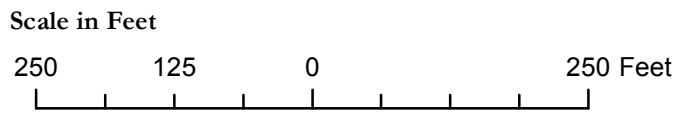


Image Data from ESRI  
 Web Mercator Auxiliary  
 Sphere (WKID 102100)  
 Aerial Photography  
 Last Updated: May 2014

Grand County G.I.S.  
 GRAND COUNTY GOVERNMENT  
 Courthouse, 308 Ryan Ave., P.O. Box #264  
 Hot Sulphur Springs, CO 80451  
 Phone (970) 725-1341 Fax (970) 725-3303

COUNTY MAP  
 Mapped, edited, and published by the  
 Grand  
 County Geographic Information System  
 (GCIS) Dept. Compiled from U.S. West  
 Landbase Data digitized from the Grand  
 County Assessor Parcel Base Maps.  
 Map Edited 2013 AG

PROJECTION:  
 Colorado State Plane Coordinate System  
 North Zone 10N  
 1983 North American Datum (NAD83)

DISCLAIMER:  
 This map is for illustrative purposes only, and  
 is not suitable for parcel specific decision  
 making. UNDER NO CIRCUMSTANCES SHALL GCIS  
 DATA BE USED FOR FUND DECISION PURPOSES. More  
 site-specific studies may be required to make  
 decisions and draw accurate conclusions.

This product has been developed for County use only.  
 The GIS database and data in the products are subject  
 to constant change. Its accuracy and completeness  
 cannot be guaranteed. GCIS makes no warranties or  
 guarantees, either expressed or implied, as to the  
 accuracy, completeness, or correctness of such products  
 nor accepts any liability arising from any incorrect,  
 incomplete or misleading information contained therein.

©Copyright 1998 by the County of Grand,  
 Colorado, U.S.A.  
 The information contained herein is for personal use  
 only. Any redistribution of this information is  
 strictly prohibited without permission by the County of  
 Grand, Colorado.

Approved  
 CR451  
 OHV Route  
 w/1 yr Sunset Clause