

T2S, R75W  
NE4 SECTION 10  
1705-101

Adjoining  
T2S, R75W  
1705-102

1705-102-01-002  
1705-102-03-001  
1705-102-03-002

1705-104-08-002  
1705-102-00-005

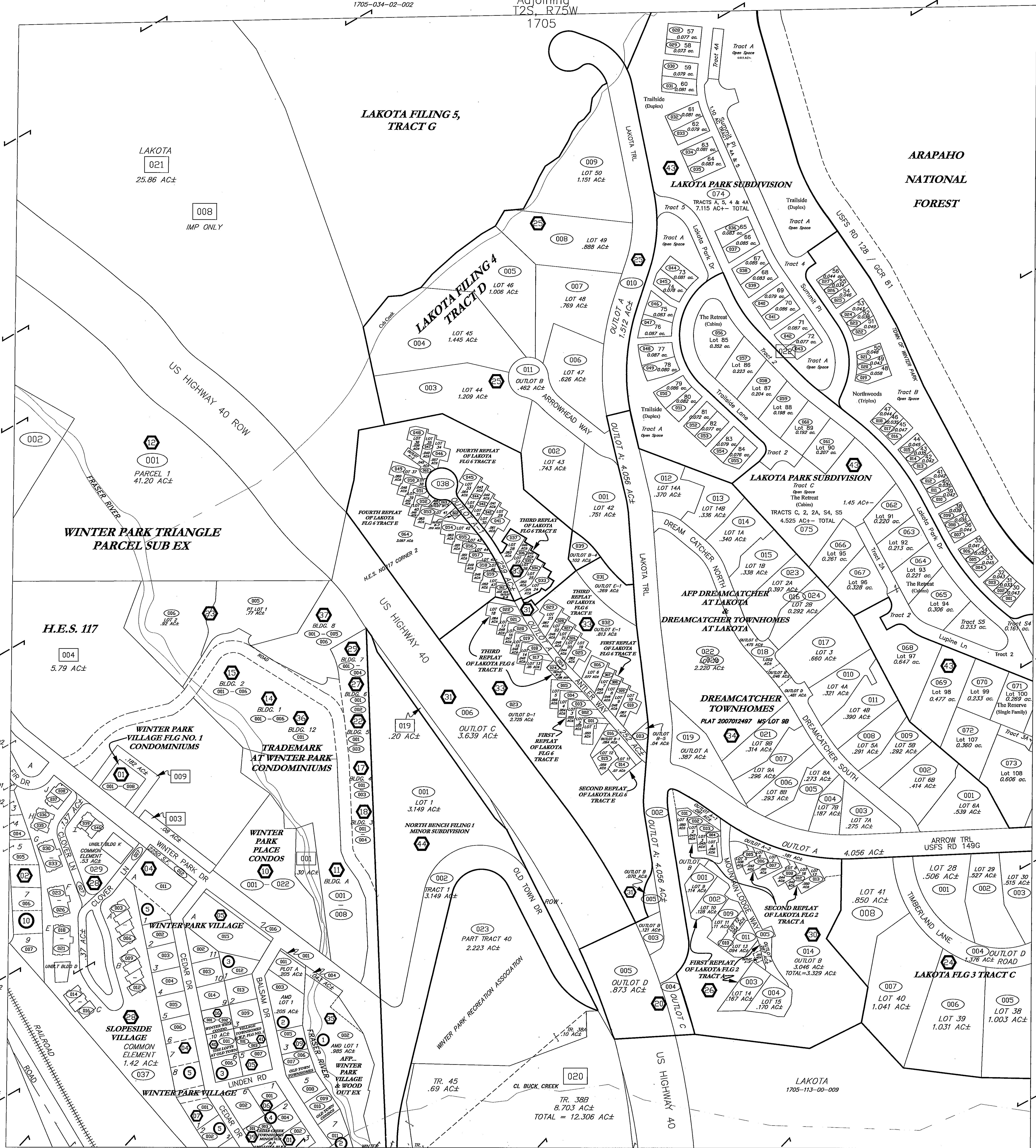
1705-104-08-001 1705-104-08-002 1705-104-39-004 1705-104-01-002

1705-034-02-002

Adjoining  
T2S, R75W  
1705

Adjoining  
T2S, R75W  
1705

1705-113-00-009

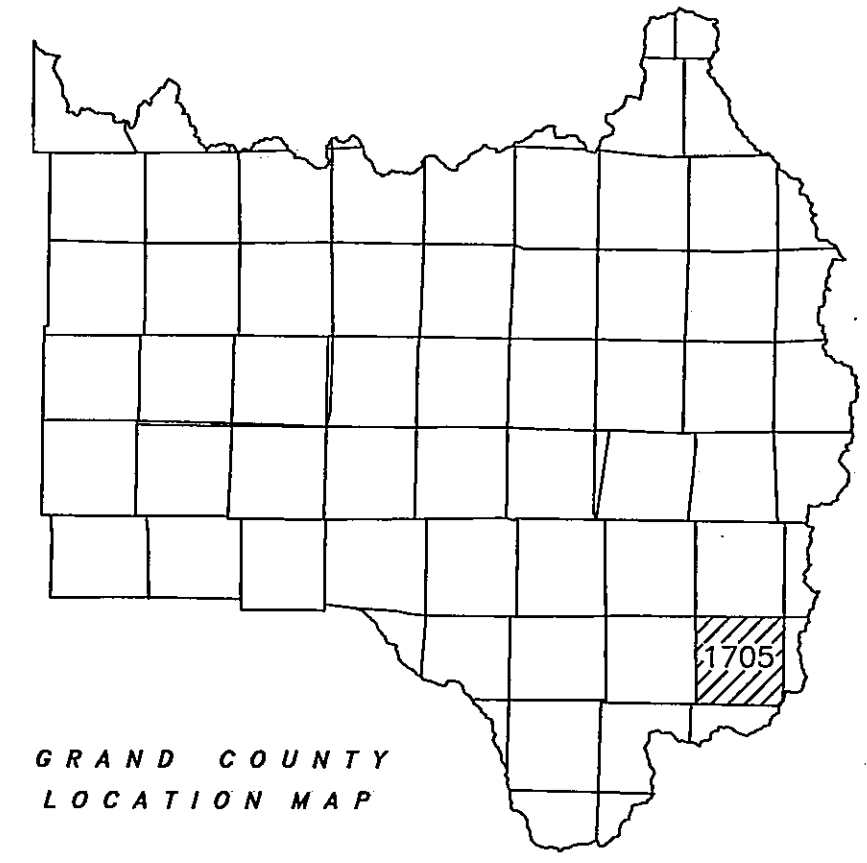


GRAND COUNTY

OWNER BY \_\_\_\_\_ DATE \_\_\_\_\_  
 CHECKED BY \_\_\_\_\_ DATE \_\_\_\_\_

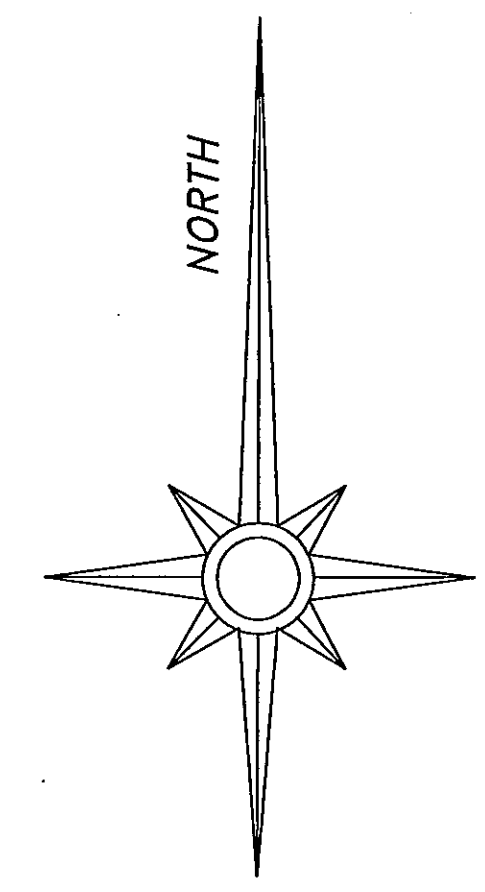
REVISED

DATE	BY	REMARKS
1/7/05	NFP	FIRST PLAT BOOK MAP OF 1705-101
1/11/05	NFP	REVISED PLAT OF LAKOTA FLG 2 & 3
1/11/05	NFP	REVISIONS TO CONDOMINIUM BUSINESS 12
1/11/05	NFP	REVISIONS TO CONDOMINIUM BUSINESS 9
1/11/05	NFP	REVISIONS TO CONDOMINIUM BUSINESS 8
1/11/05	NFP	REVISIONS TO CONDOMINIUM BUSINESS 7
1/11/05	NFP	REVISIONS TO CONDOMINIUM BUSINESS 6
1/11/05	NFP	REVISIONS TO CONDOMINIUM BUSINESS 5
1/11/05	NFP	REVISIONS TO CONDOMINIUM BUSINESS 4
1/11/05	NFP	REVISIONS TO CONDOMINIUM BUSINESS 3
1/11/05	NFP	REVISIONS TO CONDOMINIUM BUSINESS 2
1/11/05	NFP	REVISIONS TO CONDOMINIUM BUSINESS 1
1/11/05	NFP	REVISIONS TO CONDOMINIUM BUSINESS 0



6	5	4	3	2	1
7	8	9	10	11	12
13	14	15	16	17	18
19	20	21	22	23	24
25	26	27	28	29	30
31	32	33	34	35	36

TOWNSHIP INDEX



SCALE: 1" = 100'

WARNING:  
This map is for assessment purposes only. It is not necessarily accurate by surveying standards. Do Not use for legal conveyance.

T2S, R75W  
NE4 SECTION 10

1705-101

Adjoining  
T2S, R75W  
1705-104