

1593

T. 1 S., R. 78 W.

TAX DISTRICT:
SCHOOL DISTRICT:
144531400001

1445-282-00-017

1445-282-00-017

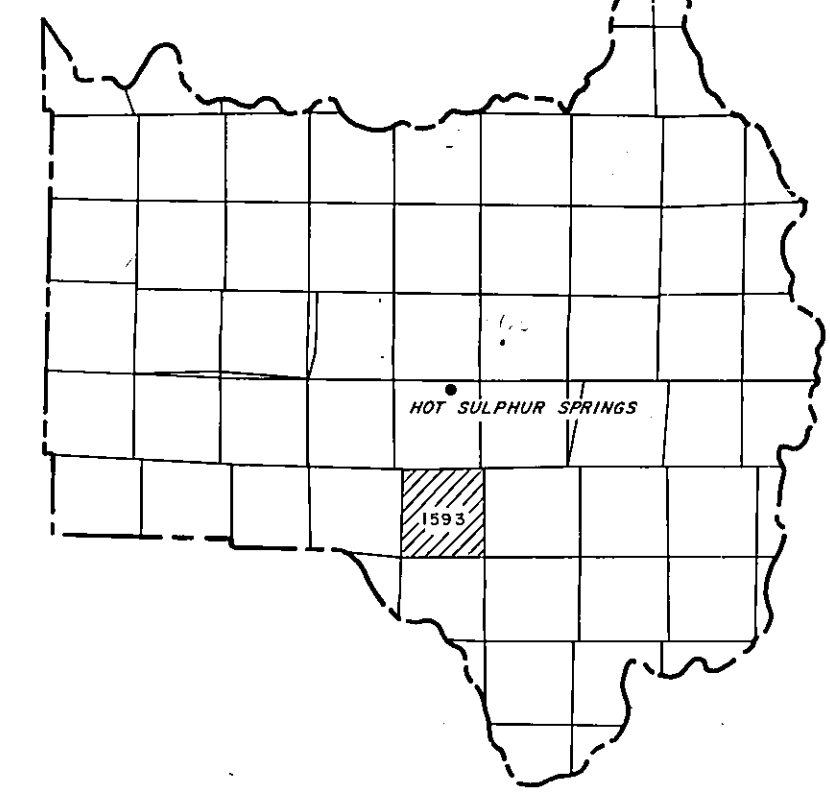
Adjoining
T. 1 N., R. 78 W.
1445

1445-342-00-077

GRAND COUNTY

DRAWN BY *CLB* DATE _____
 CHECKED BY _____ DATE _____

REVISED		
Date	By	Remarks
8-7-85	DL	UPDATE
3-97	SE	UPDATE
3-98	Tim	UPDATE
2-99	SRV	UPDATE
6/14/05	IHP	UPDATE BY OS-CELO
6/14/05	HLP	LSP REC NO 2005-005758
3/22/06	JL	SPO6-132 REC NO 2006-007808
1-07	JL	SPO6-205 SEC 6 SPLIT RANSH
3-07	JL	SPO7-028 SPLIT LSP H84
3-07	JL	SPO7-031 SPLIT 1593-291-00-109/110
3-07	JL	SPO7-043 III THRU III SEC 717 8 18
4-07	JL	SPO7-046 III 4 B IIS.
12-07	JL	SPO7-104 1693063-00-116
1-08	JL	SPO8-06 GALLEY RANCH COMBINE
7-08	JV	SPO8-28 LUPINE MEADOWS



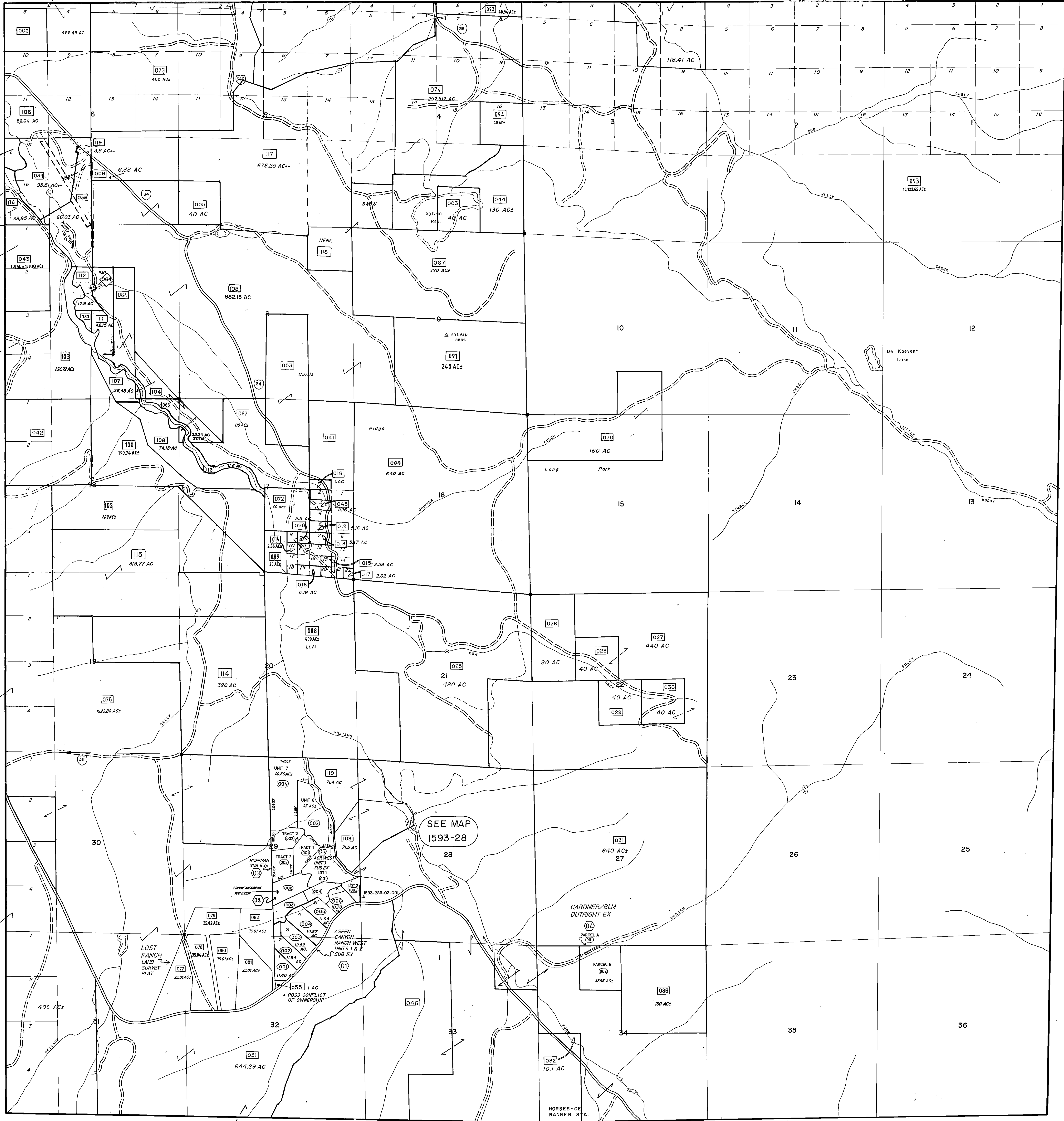
GRAND COUNTY
Location Map

6	5	4	3	2	1
7	8	9	10	11	12
18	17	16	15	14	13
19	20	21	22	23	24
30	29	28	27	26	25
31	32	33	34	35	36

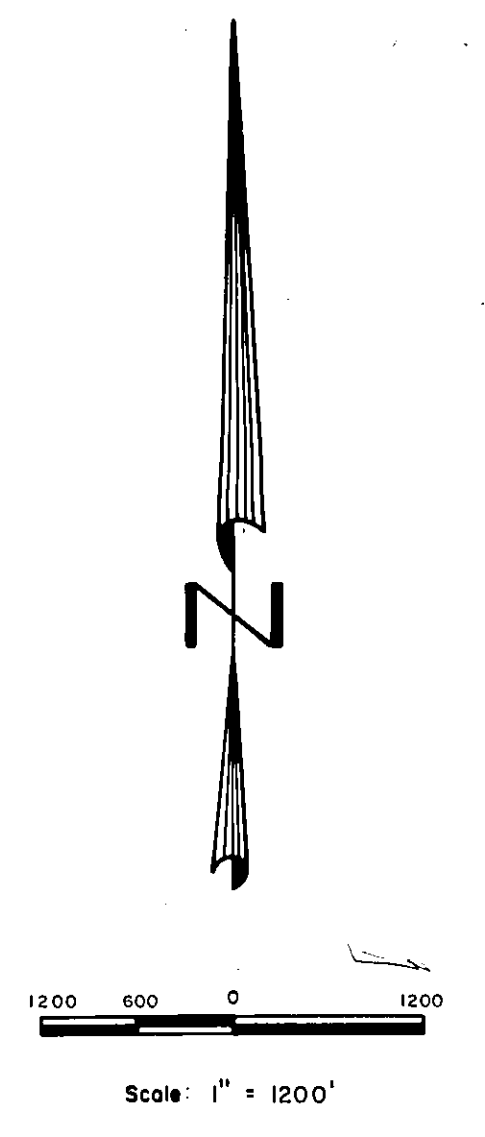
TOWNSHIP INDEX

Adjoining
T. 1 S., R. 77 W.
1591

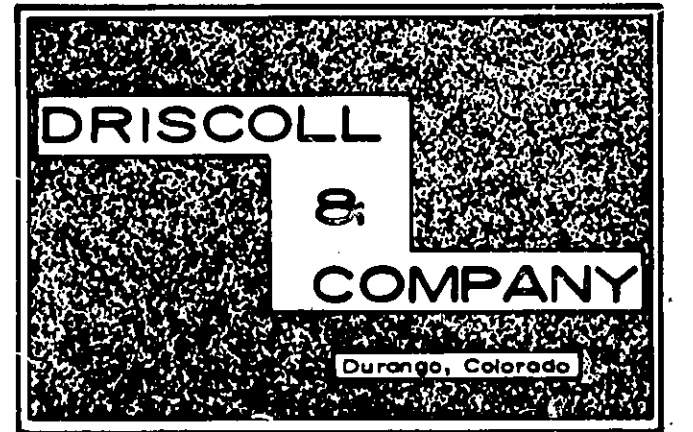
Adjoining
T. 1 S., R. 79 W.
1595



SEE MAP
1593-28



WARNING:
This map is for assessment purposes only. It is not necessarily accurate by surveying standards. Do not use for legal conveyance.



Adjoining
T. 2 S., R. 78 W.
1699

T. 1 S., R. 78 W.

1593

Last metes and bounds parcel number used is 118