

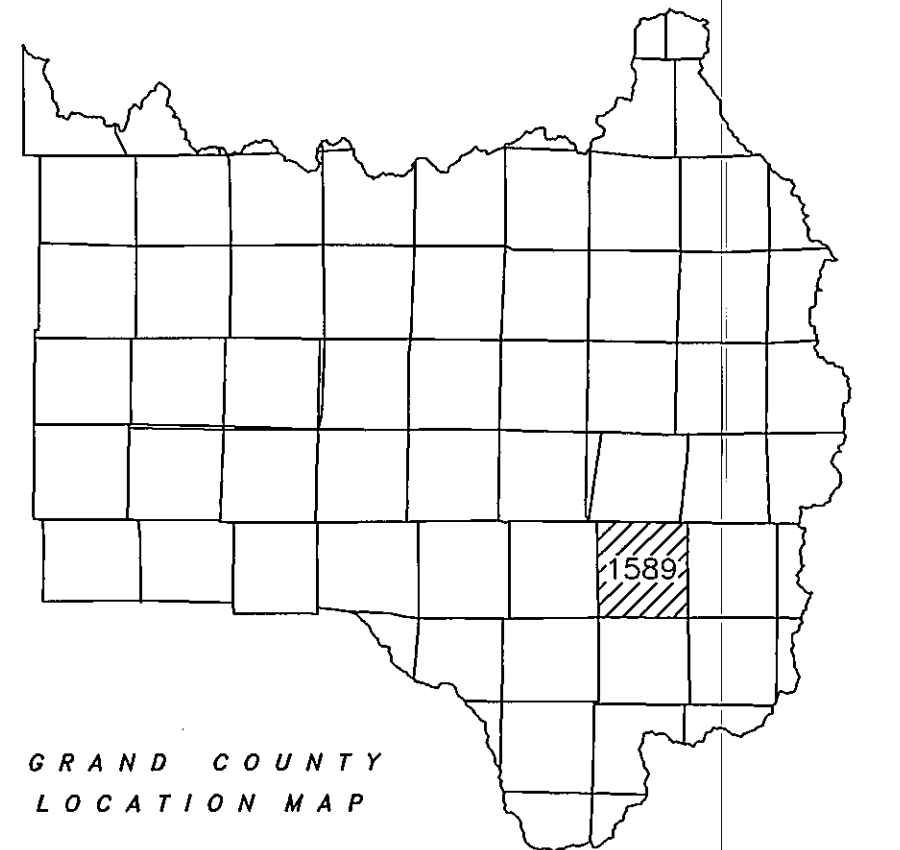
T1S, R76W
N2/3 OF NW4 SEC 1

1589-012

Adjoining
T1N, R76W
1451-36

GRAND
COUNTY

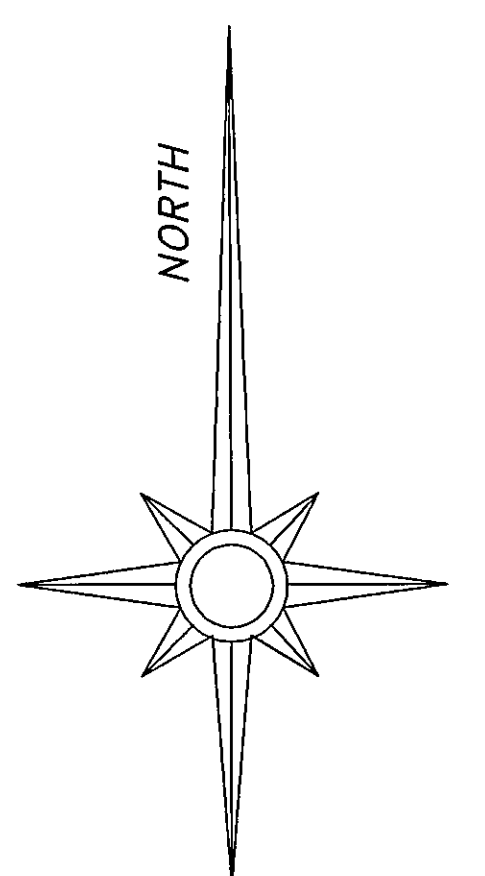
DRAWN BY:	DATE:
CHECKED BY:	DATE:
REVISED	
DATE:	REMARKS:
11/2/04 HLP	FIRST AUTOCAD MAP OF 1589-012
3/1/05 HLP	SPOS-020, OPEN - BARNHART/SHAW UNIT



GRAND COUNTY
LOCATION MAP

6	5	4	3	2	1
7	8	9	10	11	12
18	17	16	15	14	13
19	20	21	22	23	24
30	29	28	27	26	25
31	32	33	34	35	36

TOWNSHIP INDEX



SCALE: 1" = 100'

WARNING:
This map is for assessment purposes
only. It is not necessarily accurate by
surveying standards. Do Not use for legal
conveyance.

T1S, R76W
N2/3 OF NW4 SEC 1

1589-012

Adjoining
T1S, R76W
1589-021

Adjoining
1589-011
T1S, R76W

**FRASER RIVER
HIGHLANDS NO. 1
SUB EX**
PT PARCEL A

**TABERNASH SEWER
SITE OUT EX**

**GRY PARTNERS LLP
WETLAND OUT EX**

**TALLEY-NEEDHAM
OUT EX**

E.J. VULGAMOTT'S

4TH ADDITION

**W.F. VULGAMOTT'S
1ST ADDITION**

**TOWN OF
TABERNASH**

**TOWN OF
TABERNASH**

US HWY 40

053
12.25 AC±

032
2.1 AC±
PARCEL A

044
18.64 AC±

048
28.66 AC±

045
51.55 AC±

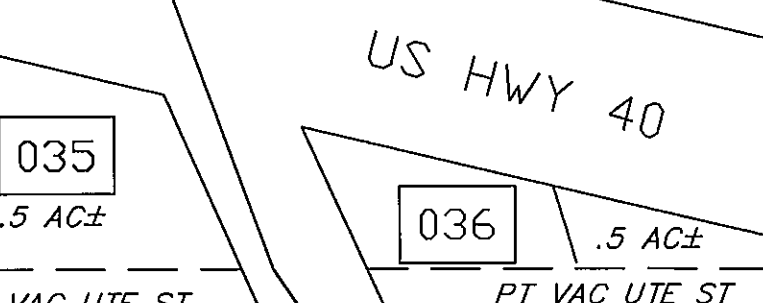
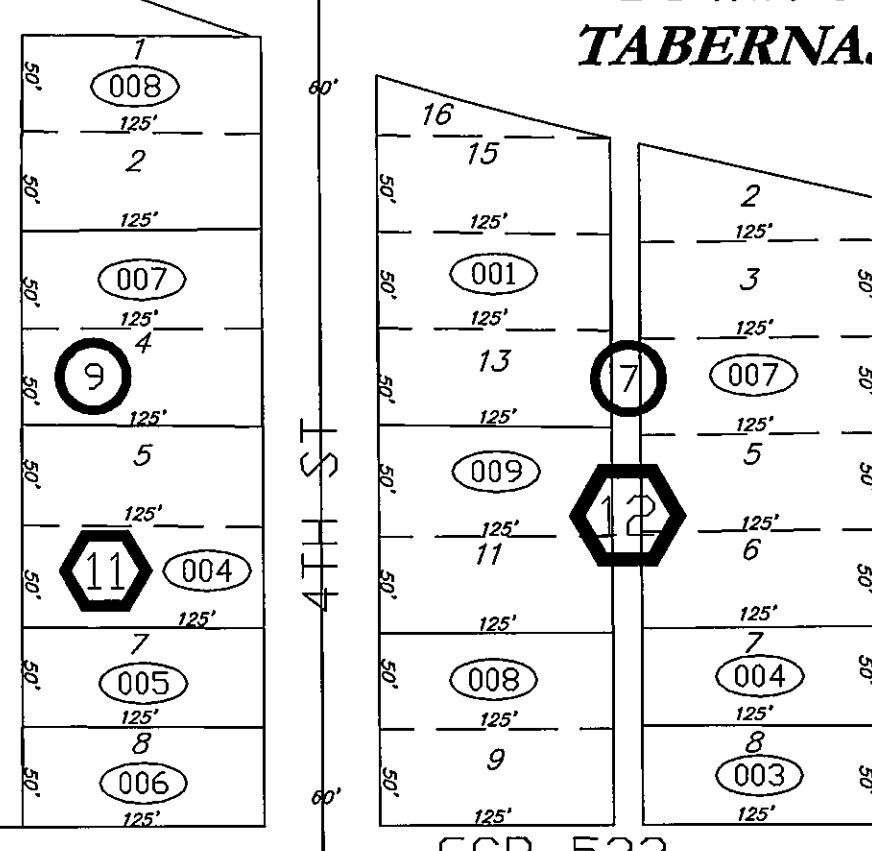
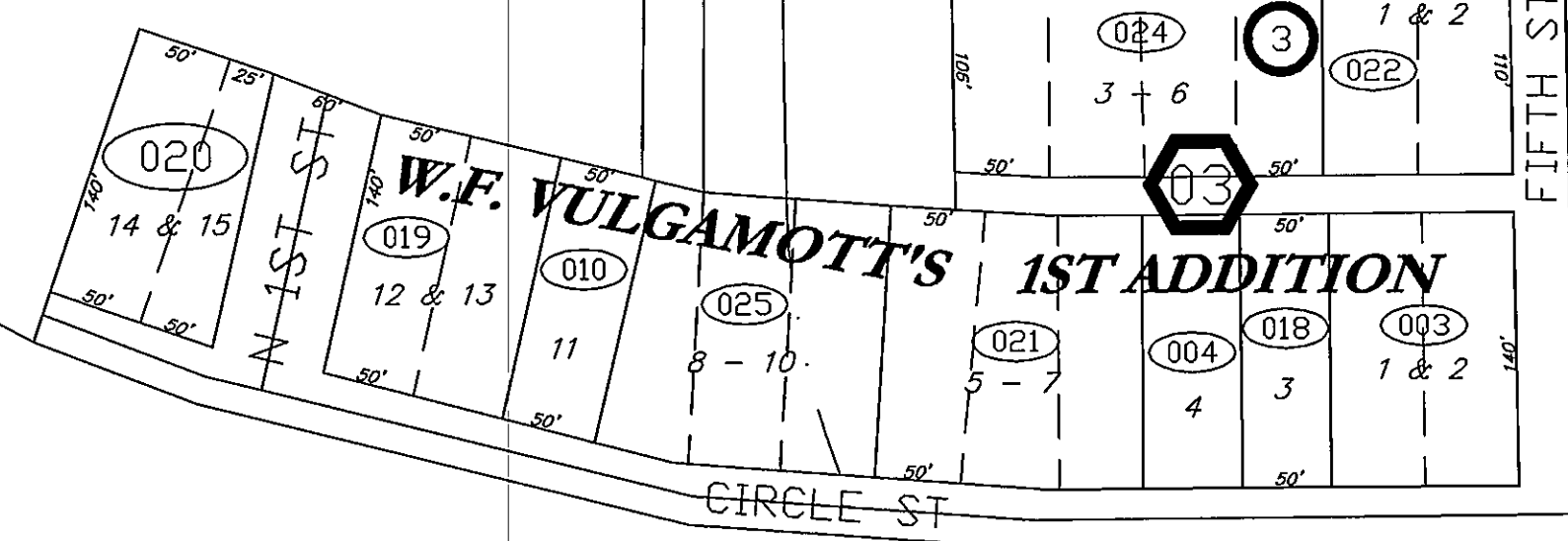
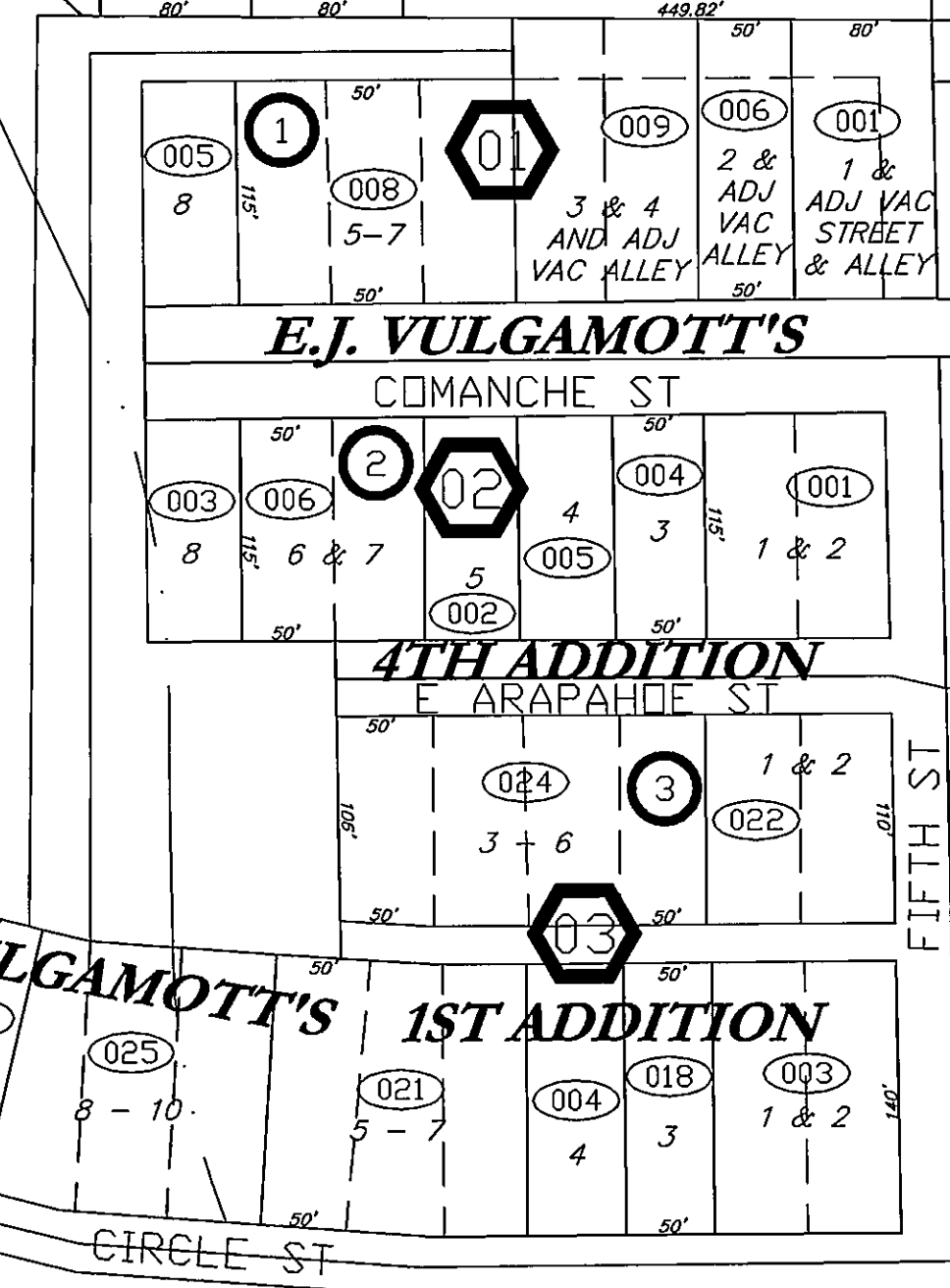
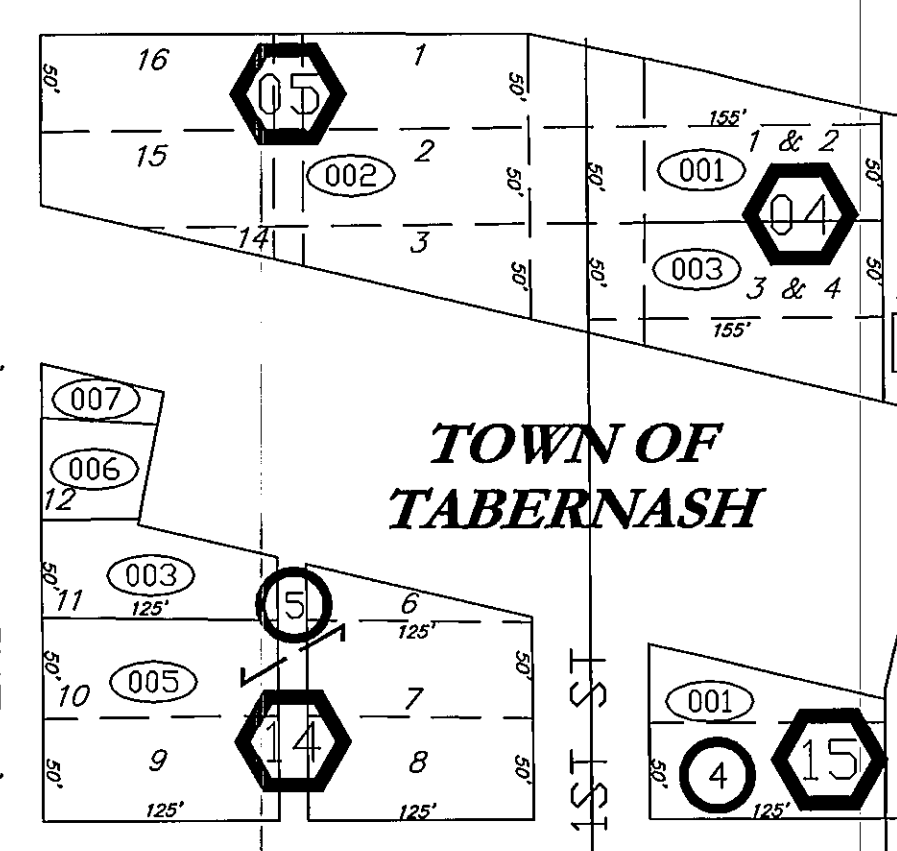
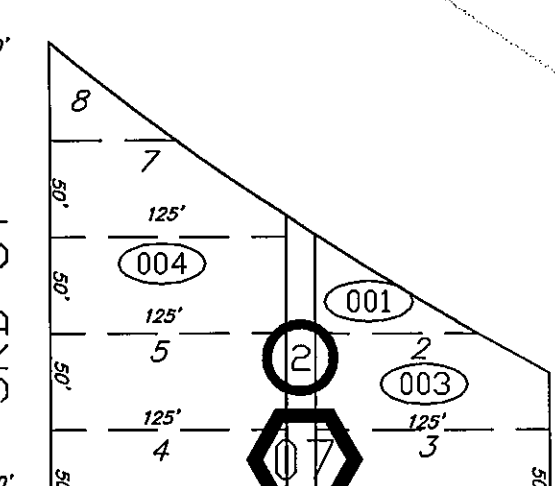
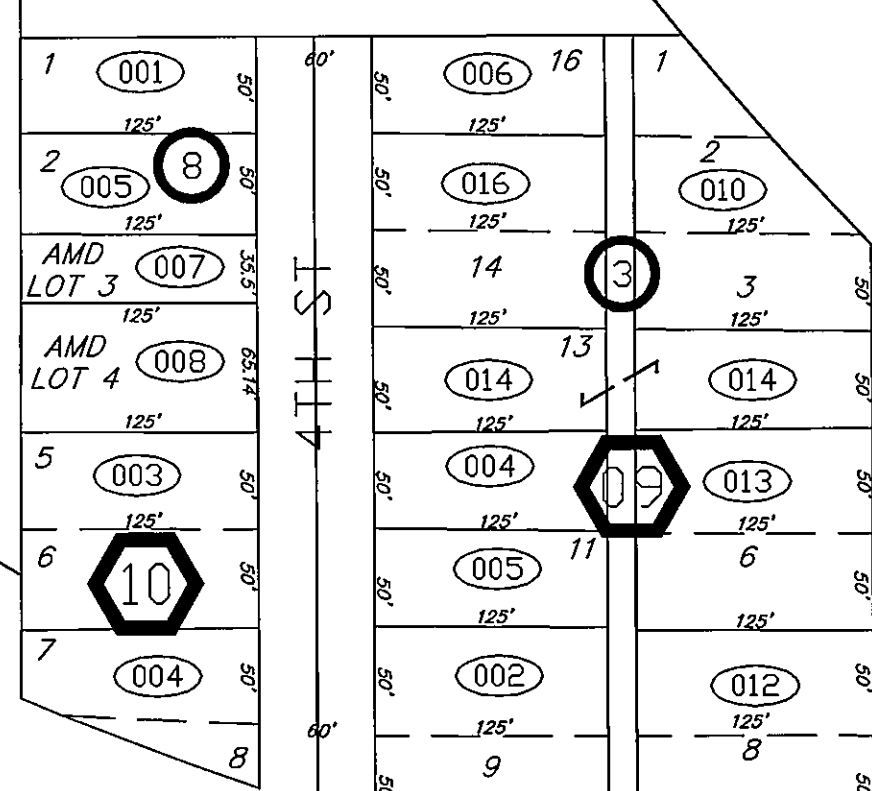
038
4.33 AC±

TRACT B
1.471 AC±
002

TRACT C
4.67 AC±
004

TRACT A
.378 AC±
003

001
LOT 1
5.61 AC±



035
.5 AC±

036
.5 AC±

Adjoining
T1S, R76W
1589-012