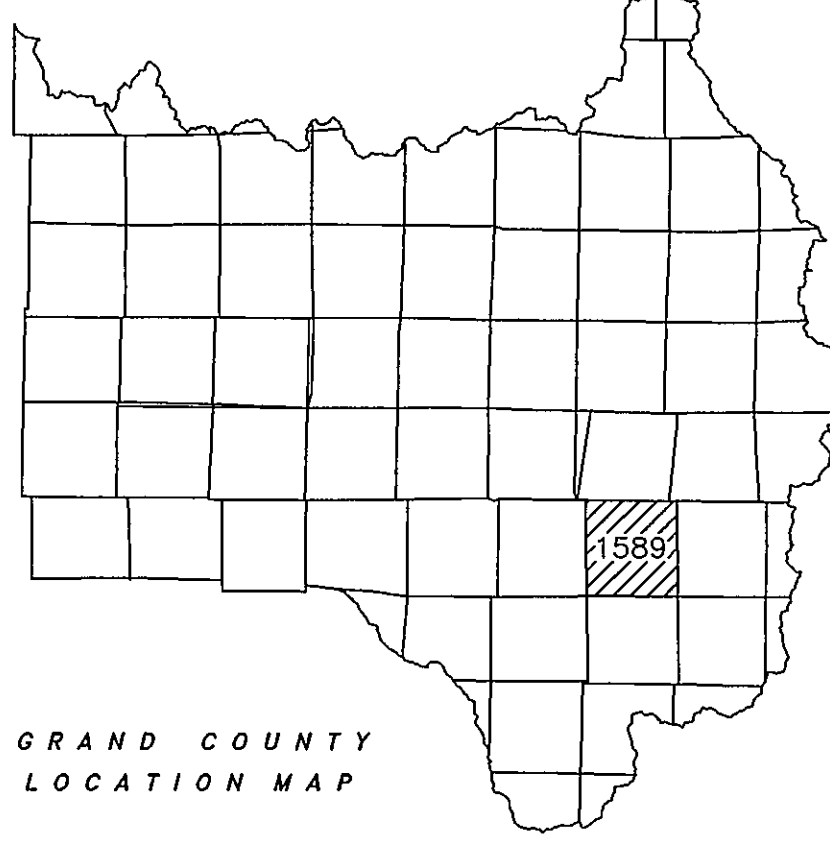


Adjoining
T1N, R76W & T1N, R75W
1451 & 1453

GRAND
COUNTY

DRAWN BY	DATE	
CHECKED BY	DATE	
REVISED		
DATE	BY	REMARKS
6/7/04	HLP	FIRST AUTOCAD MAP OF 1589-011
6/29/06	HLP	SP 06-105; HAYWARD SPLIT

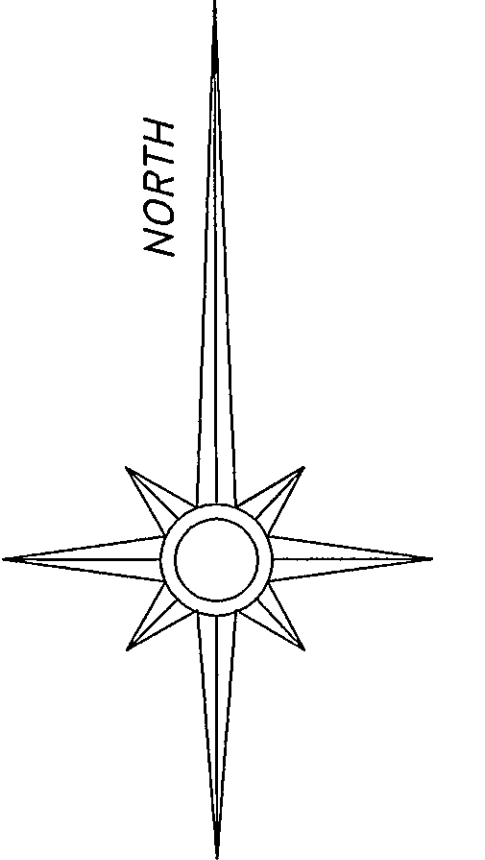
T1S, R76W
NE4
1589-011



GRAND COUNTY
LOCATION MAP

6	5	4	3	2	1
7	8	9	10	11	12
18	17	16	15	14	13
19	20	21	22	23	24
30	29	28	27	26	25
31	32	33	34	35	36

TOWNSHIP INDEX

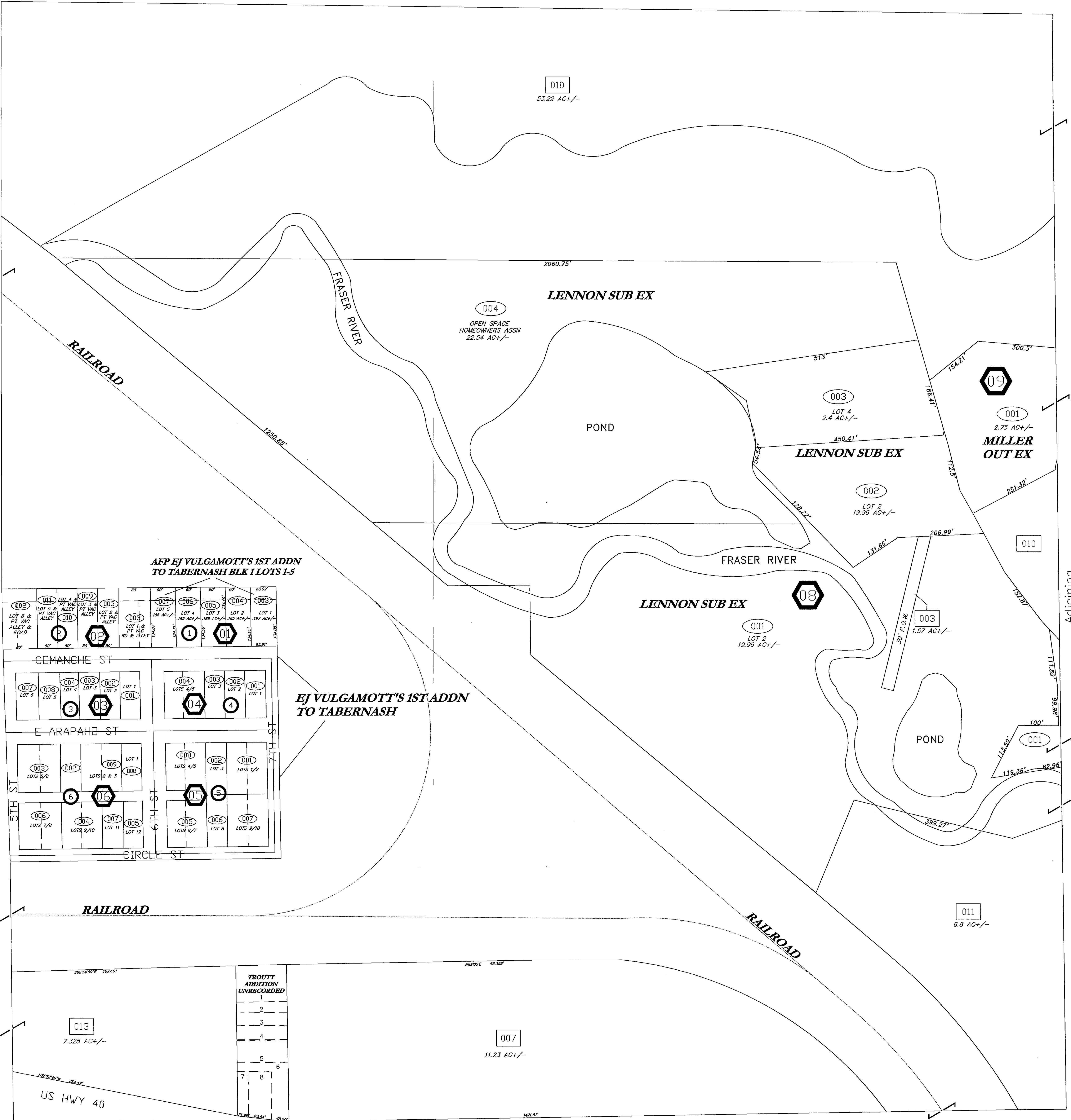


SCALE: 1" = 100'

WARNING:
This map is for assessment purposes
only. It is not necessarily accurate by
surveying standards. Do Not use for legal
conveyance.

T1S, R76W
NE4

1589-011



Adjoining
T1S, R76W
1589-012

Adjoining
T1S, R75W
1587-06

TROUT
ADDITION
UNRECORDED

1
2
3
4
5
6
7
8

Adjoining
T1S, R76W
1589