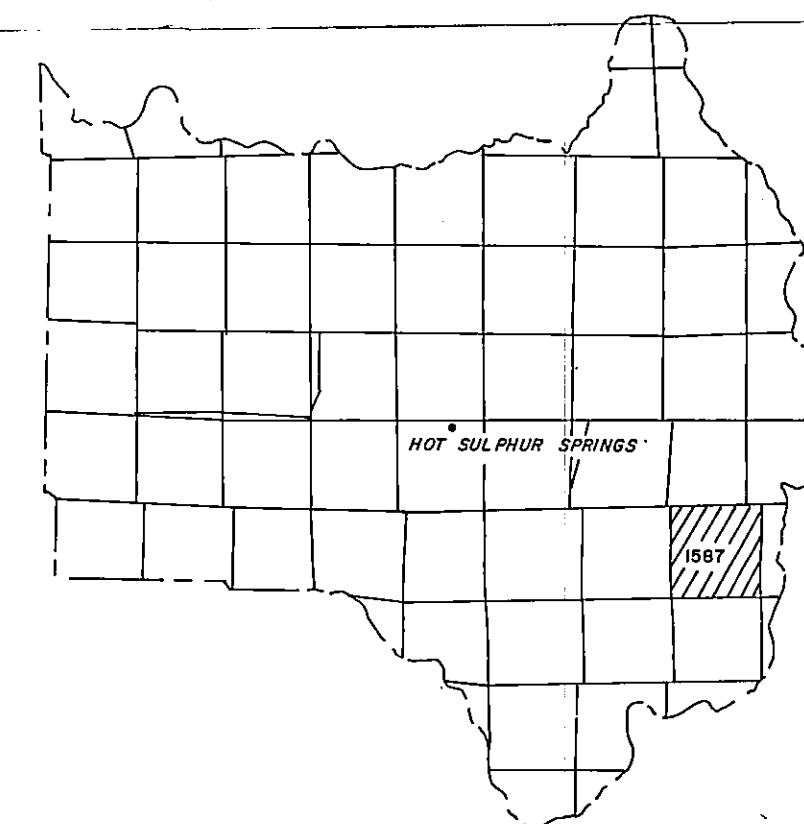


1587-33-2
T. 1 S., R. 75 W.
NW 1/4 OF SEC. 33

Adjoining
T. 1 S., R. 75 W.
1587-28

GRAND COUNTY

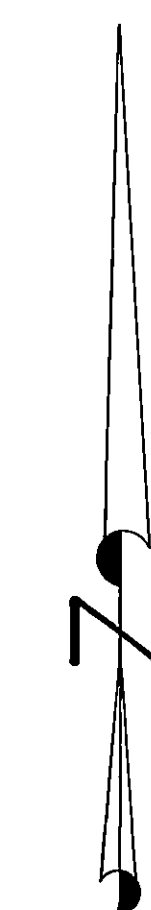
REVISED		
Date	By	Remarks
5-83	DJG	Original
11-15	DF	UPDATE
12-14	DF	UPDATE
8-27-96	SF	UPDATE
2-97	SF	UPDATE
2-98	SF	UPDATE
3-99	DF	UPDATE
2-99	SF	UPDATE
3-2004	DF	SP-155, HIGHTON CHBNE
10-06	JL	UPDATE
1-07	JL	SP07-007 1587-332-00-089
1-08	JL	SP08-01 1587-332-40-001-022
12-08	JV	SP08-76



GRAND COUNTY
Location Map

6	5	4	3	2	1
7	8	9	10	11	12
18	17	16	15	14	13
19	20	21	22	23	24
30	29	28	27	26	25
31	32	33	34	35	36

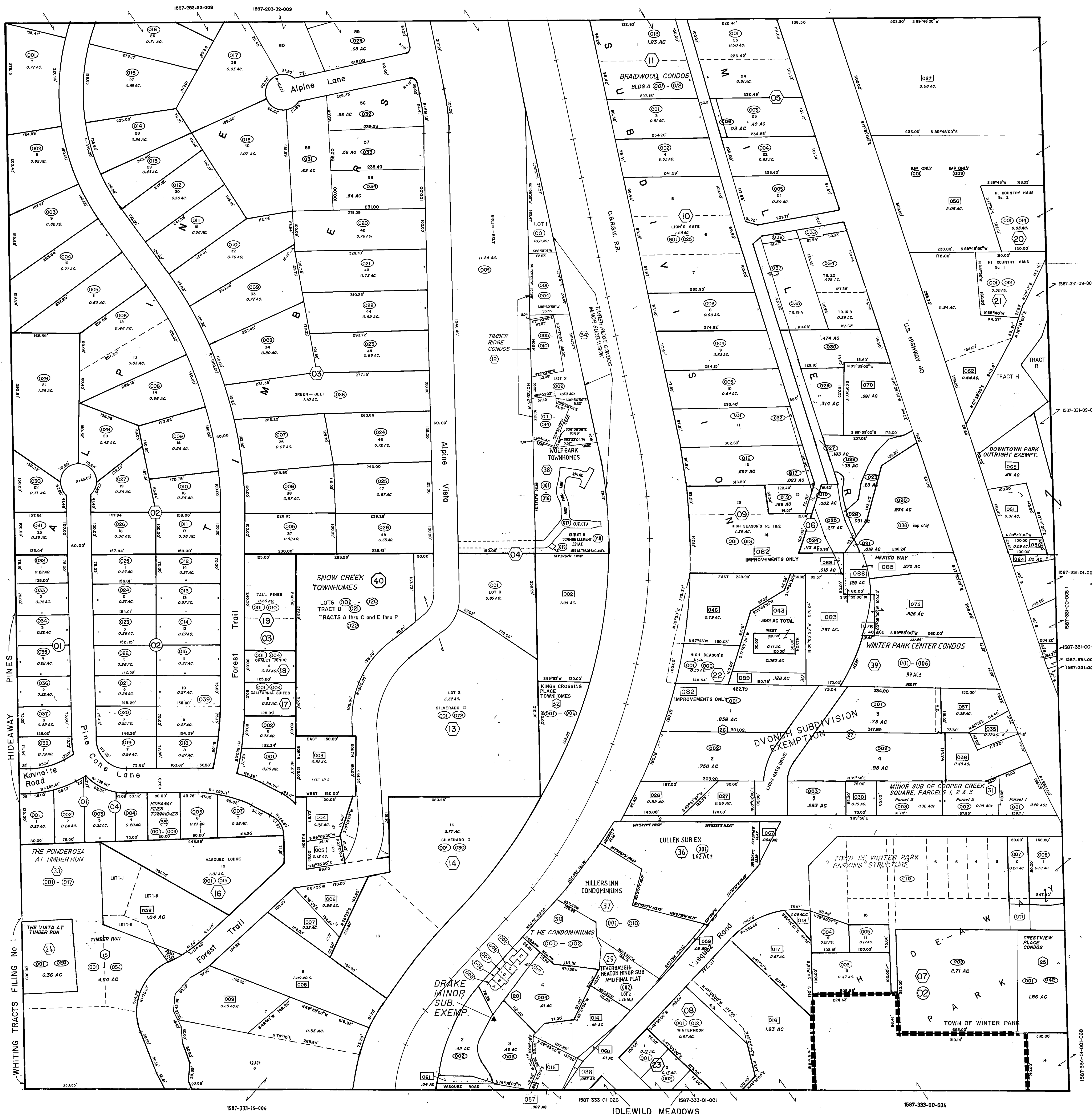
TOWNSHIP INDEX



Scale 1" = 100'

WARNING:
This map is for assessment purposes only. It is not necessarily accurate by surveying standards. Do not use for legal conveyance.

MOUNTAIN WEST SURVEYS, INC.
P.O. BOX 65/ 908 PARK AVE.
KREMMLING, COLO. 80459



Adjoining
T. 1 S., R. 75 W.
1587-32

Adjoining
T. 1 S., R. 75 W.
1587-33-1

Adjoining
T. 2 S., R. 75 W.
1587-33-3

T. 1 S., R. 75 W.
NW 1/4 OF SEC. 33
1587-33-2

Last metes and bounds parcel number used is 088