

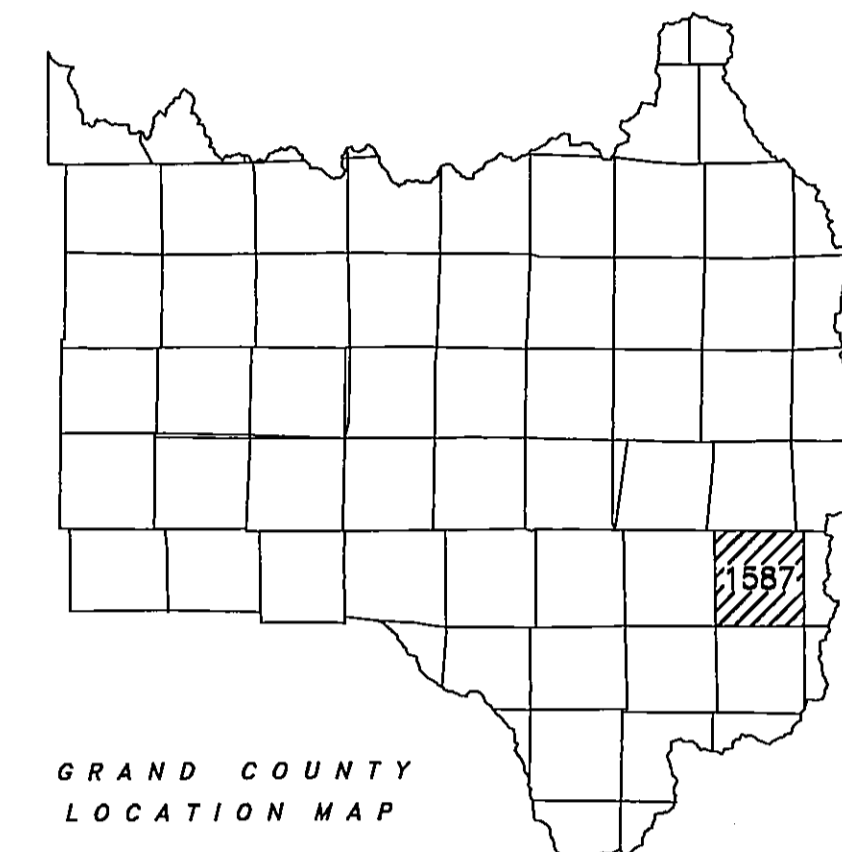
T1S, R75W  
NE4 OF SEC 32

1587-321

Adjoining  
T1S, R75W  
1587-29

GRAND  
COUNTY

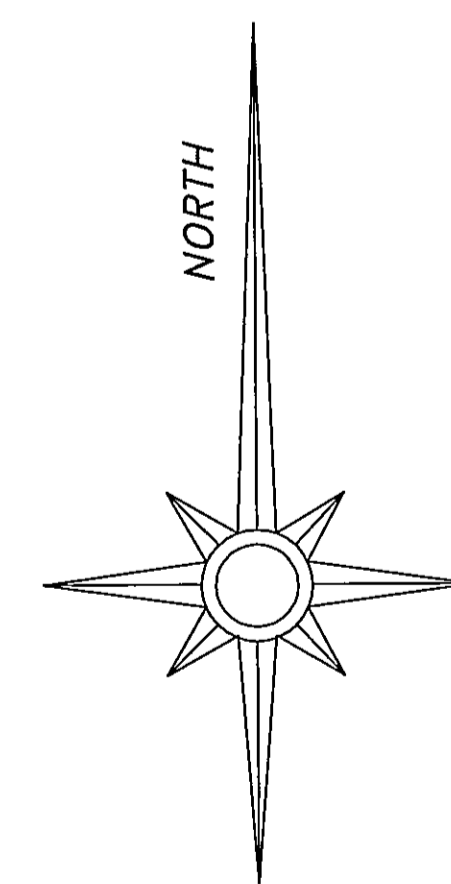
DRAWN BY:	DATE:	
CHECKED BY:	DATE:	
REVISION		
DATE	BY	REMARKS
10/26/04	REP	FIRST AUTOCAD MAP OF 1587-321



GRAND COUNTY  
LOCATION MAP

6	5	4	3	2	1
7	8	9	10	11	12
13	14	15	16	17	18
19	20	21	22	23	24
25	26	27	28	29	30
31	32	33	34	35	36

TOWNSHIP INDEX



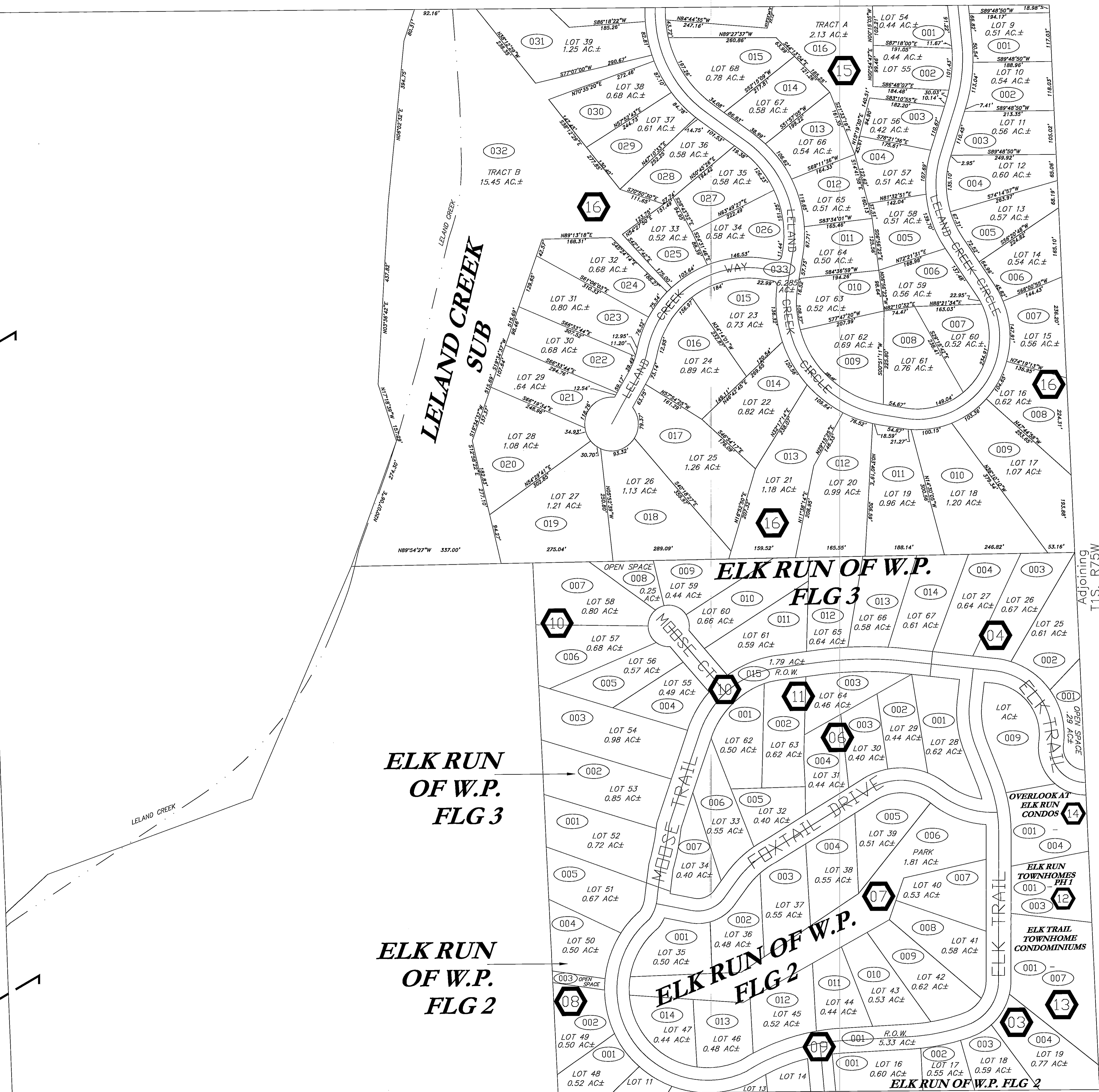
SCALE: 1" = 100'

WARNING:  
This map is for assessment purposes  
only. It is not necessarily accurate by  
surveying standards. Do Not use for legal  
conveyance.

Adjoining  
T1S, R75W  
1587-32

1587-323-00-154

Adjoining  
T1S, R75W  
1587-332



Adjoining  
T1S, R75W  
1587-324

T1S, R75W  
NE4 OF SEC 32

1587-321