

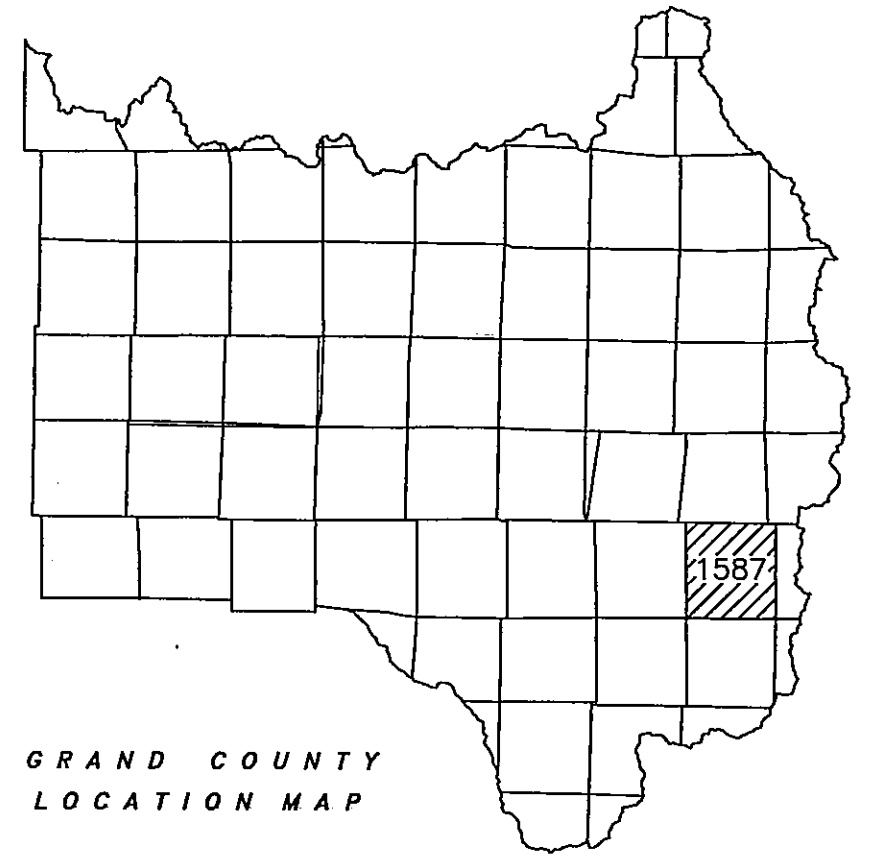
T1S, R75W
SECTION 29
1587-29

Adjoining
T1S, R75W
1587

Adjoining
T1S, R75W
1587-203 & 1587-204

GRAND
COUNTY

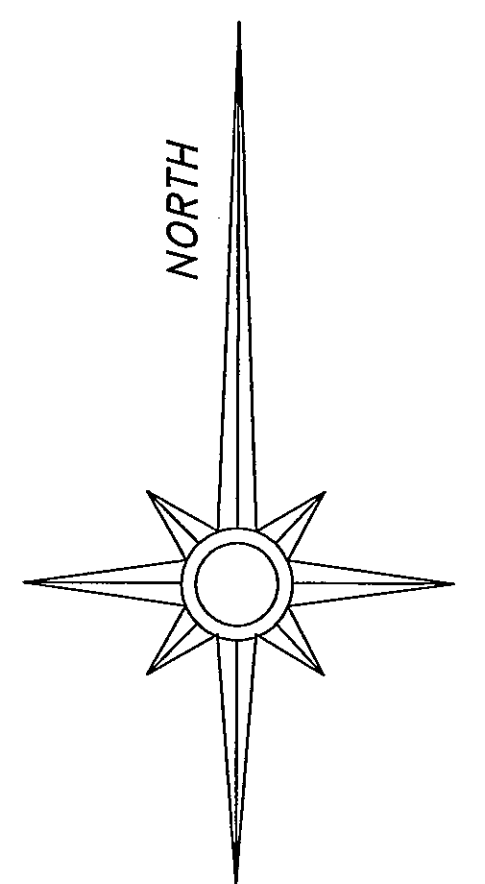
DATE	BY	REMARKS
10/20/24	MJP	FIRST AUTOCAD MAP OF 1587-29
10/20/24	MJP	UPDATING COZENS MEADOW AT GRAND PARK
10/20/24	JL	COZENS POINTE AT GRAND PARK
10/20/24	JL	COZENS MEADOW AT GRAND PARK AMENDMENT #1
10/02	JL	SP28-51 Lot 1, Cozens Pointe
10/02	JL	SP28-51 Lot 2, Cozens Pointe (SEE MAP 1587-29-2)



GRAND COUNTY
LOCATION MAP

6	5	4	3	2	1
7	8	9	10	11	12
18	17	16	15	14	13
19	20	21	22	23	24
30	28	27	26	25	
31	32	33	34	35	36

TOWNSHIP INDEX



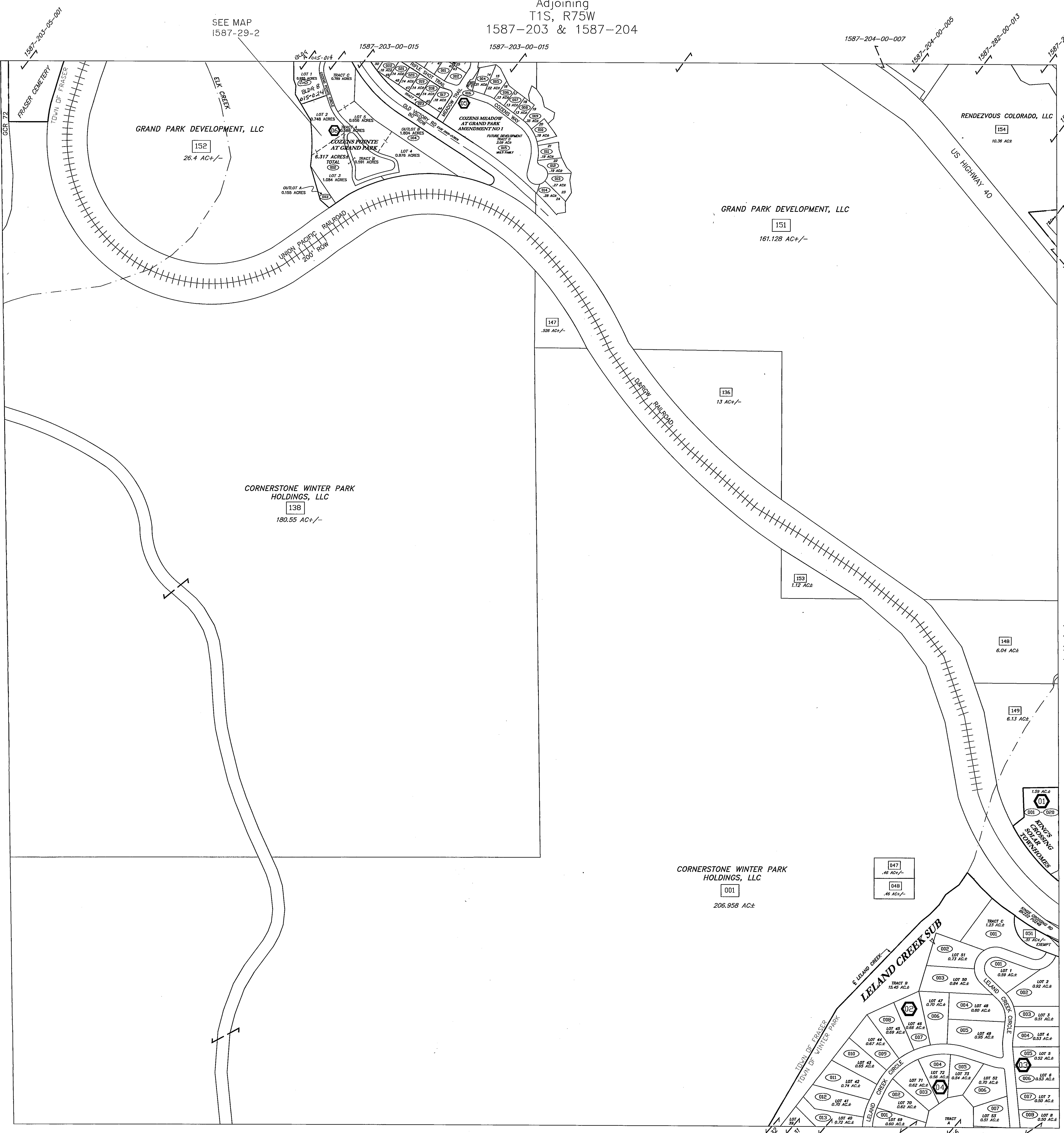
SCALE: 1" = 200'

WARNING:
This map is for assessment purposes
only. It is not necessarily accurate by
surveying standards. Do Not use for legal
conveyance.

T1S, R75W
SECTION 29

1587-29

Adjoining
T1S, R75W
1587-32 & 1587-321



SEE MAP
1587-29-2

EAST GRAND FIRE STATION
1587-282-00-002

Adjoining
T1S, R75W
1587-28 & 1587-283