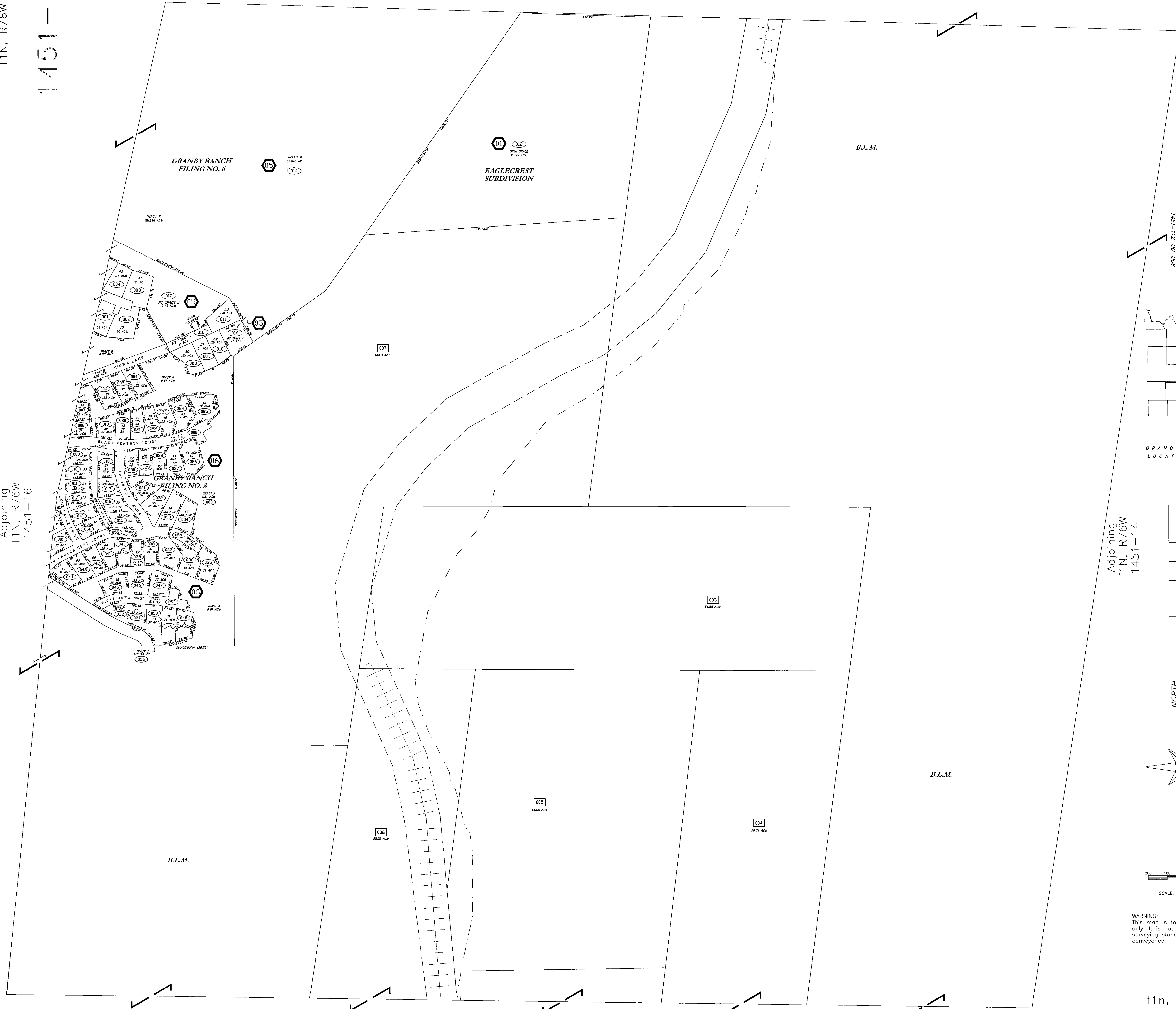


Adjoining

T1N, R76W
1451-10

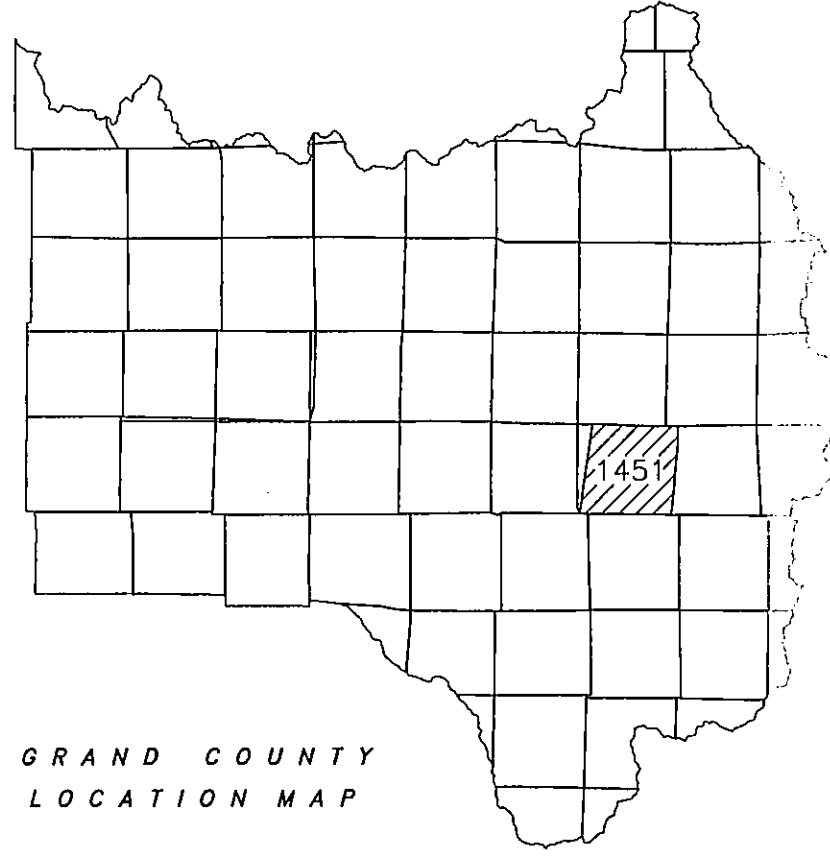
T1N, R76W

1451-15



GRAND COUNTY

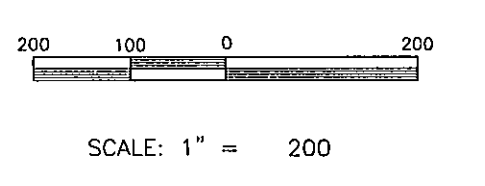
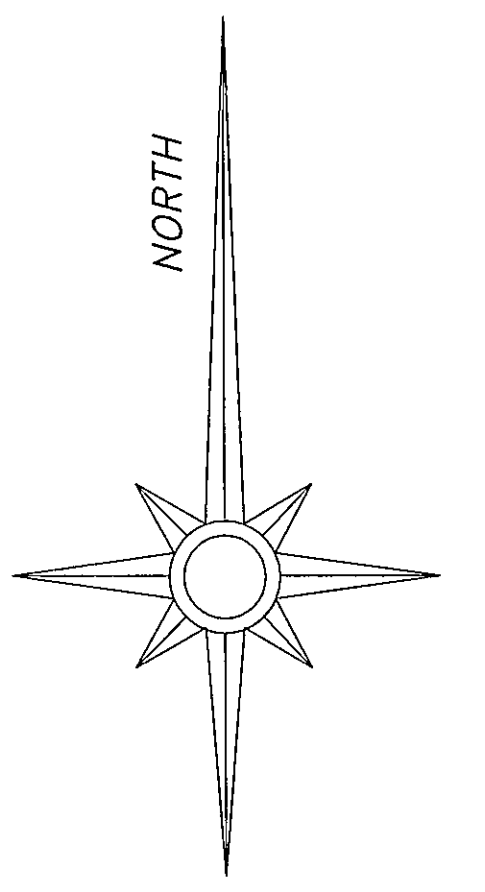
DRAWN BY	DATE	
CHECKED BY	DATE	
REVISED		
DATE	BY	REMARKS
11/21/03	NLP	FIRST AVISOR MAP OF 1451-15
02/24/04	NLP	SECOND AVISOR MAP OF 1451-15
07/24/04	NLP	THIRD AVISOR MAP OF 1451-15



GRAND COUNTY LOCATION MAP

6	5	4	3	2	1
7	8	9	10	11	12
13	14	15	16	17	18
19	20	21	22	23	24
25	26	27	28	29	30
31	32	33	34	35	36

TOWNSHIP INDEX



WARNING: This map is for assessment purposes only. It is not necessarily accurate by surveying standards. Do Not use for legal conveyance.

t1n, r76w

1451-15

Adjoining
T1N, R76W
1451-22

Adjoining
T1N, R76W
1451-16

Adjoining
T1N, R76W
1451-14