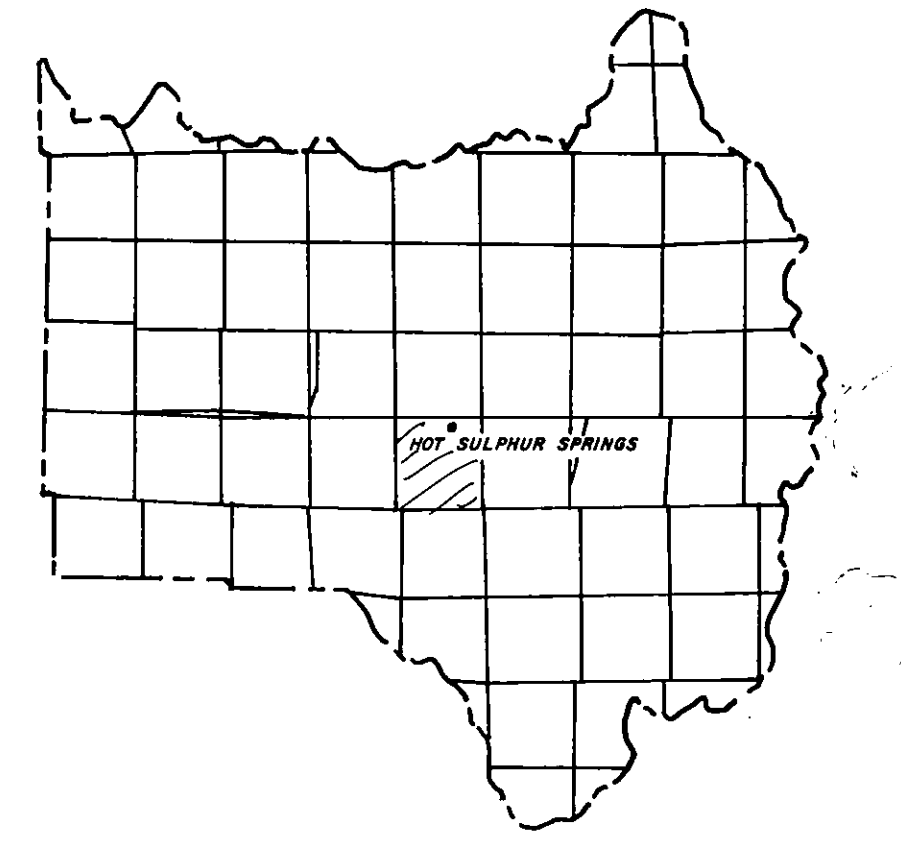


1445-091

Adjoining
T. 1 N. R. 78 W. SEC 4 SE1/4

GRAND COUNTY

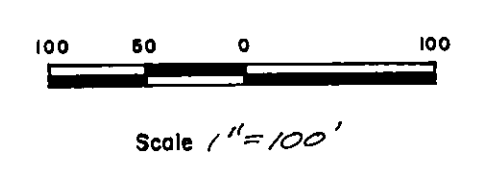
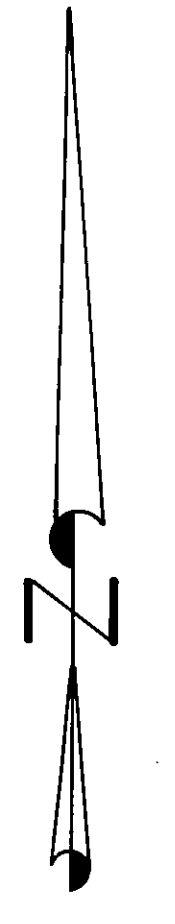
DRAWN BY <i>WJ</i>		DATE <i>8-15-95</i>
CHECKED BY		DATE
REVISED		
Date	By	Remarks
<i>8-23-95</i>	<i>JL</i>	<i>In Review</i>
<i>9/26/06</i>	<i>JL</i>	<i>SP07-032</i>
<i>3-07</i>	<i>JL</i>	<i>SP07-039 BLK 25 SPLIT</i>
<i>12-09</i>	<i>JV</i>	<i>SP09-63</i>



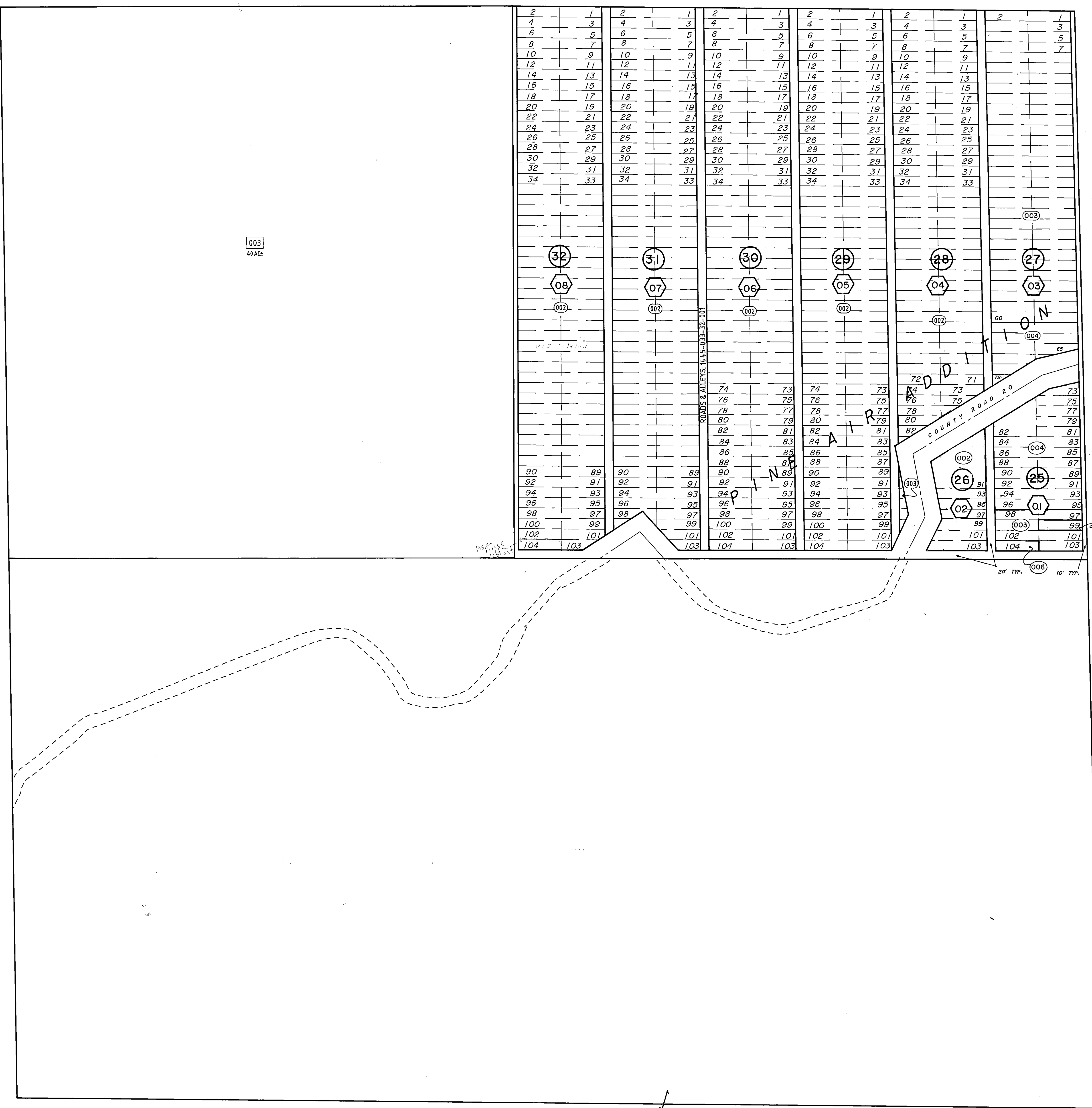
GRAND COUNTY
Location Map

6	5	4	3	2	1
7	8	9	10	11	12
13	14	15	16	17	18
19	20	21	22	23	24
25	26	27	28	29	30
31	32	33	34	35	36

TOWNSHIP INDEX



WARNING:
This map is for assessment purposes only. It is not necessarily accurate by surveying standards. Do not use for legal conveyance.



Adjoining
T. 1 N. R. 78 W., SEC. 9 NW1/4
1445-092

Adjoining
T. 1 N., R. 78 W., SEC. 9, SE1/4
1445-094

1445-093-00-056T

LAST METES AND BOUNDS PARCEL NUMBER IS 000

T. 1 N., R. 78 W., SEC. 9, NE1/4

1445-091