

Adjoining  
T. 3 N., R. 79 W.  
1185

# GRAND COUNTY

DRAWN BY		DATE	
CHECKED BY		DATE	
REVISED			
Date	By	Remarks	
9-19-97	SLD	Initial approved	
11-14-97	AP	UPDATE	
3-97	SF	UPDATE	
9-97	TR	UPDATE	
11-28-00	HUP	SFC-101	



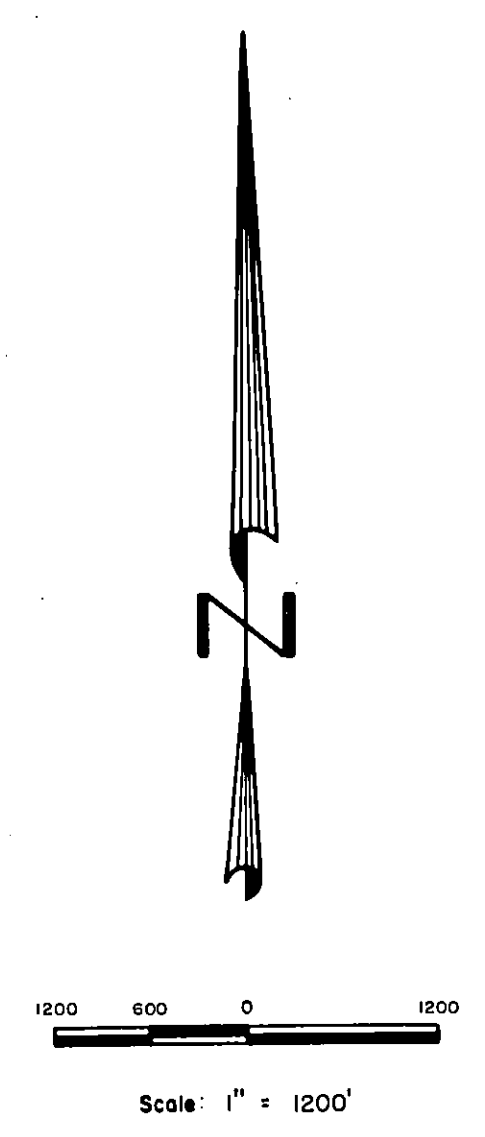
GRAND COUNTY  
Location Map

6	5	4	3	2	1
7	8	9	10	11	12
18	17	16	15	14	13
19	20	21	22	23	24
30	29	28	27	26	25
31	32	33	34	35	36

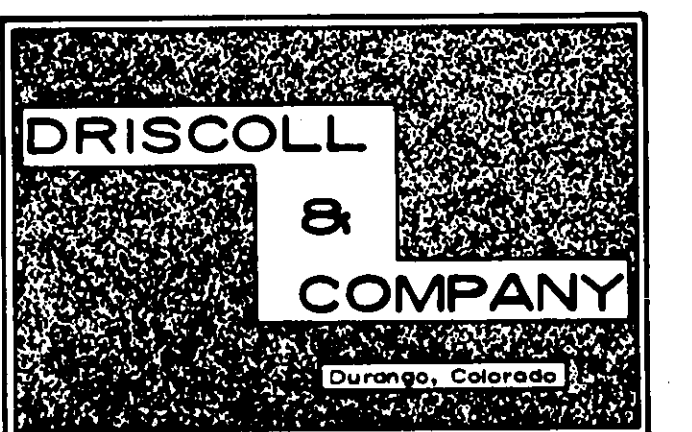
TOWNSHIP INDEX

Adjoining  
T. 2 N., R. 78 W.  
1333

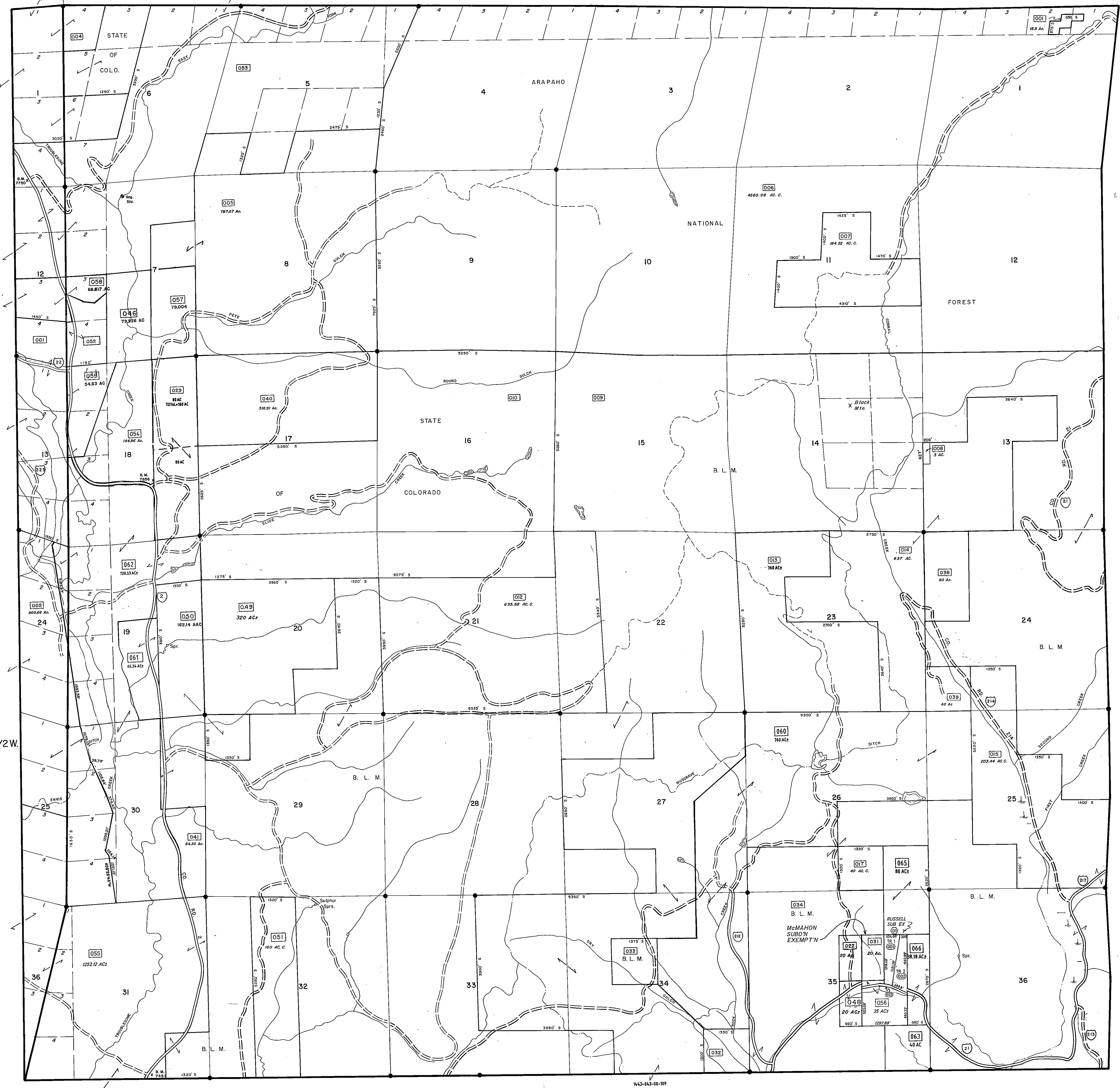
T. 2 N., R. 79 W.  
1335



WARNING:  
This map is for assessment purposes only. It is not necessarily accurate by surveying standards. Do not use for legal conveyance.



TAX DISTRICT: 10  
SCHOOL DISTRICT:  
Adjoining  
T. 3 N., R. 80 W.  
1183



1337

1335

Adjoining  
T. 2 N., R. 80 W.  
1339

T. 2 N., R. 79 1/2 W.  
1337

Adjoining  
T. 1 N., R. 79 W.  
1443

T. 2 N., R. 79 W.  
1335

T. 2 N., R. 79 1/2 W.  
1337

Last metes and bounds parcel number used is 054

Last metes and bounds number used is 002