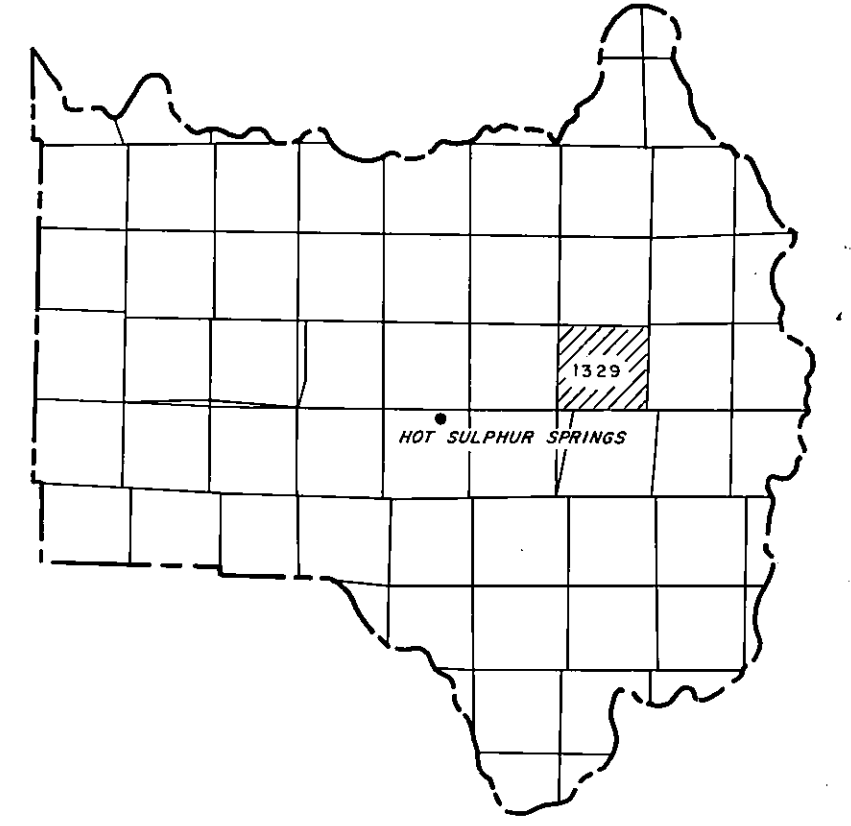


# GRAND COUNTY

DRAWN BY <i>J. Henderson</i>		DATE
CHECKED BY		DATE
REVISED		
Date	By	Remarks
5-80	JL	FINAL SUBMITTAL
11-91	SPW	REVISIONS & CORRECTIONS
1-92	SPW	REVISIONS & CORRECTIONS
6-93	DBL	Conditionally approved
11-95	AP	update
5-99	STW	Update
2-07	JL	COLNOMORA HOLDINGS SPLIT 019
2-08	JL	SP08-13 132934-00-020 B.021

RSD 4-82

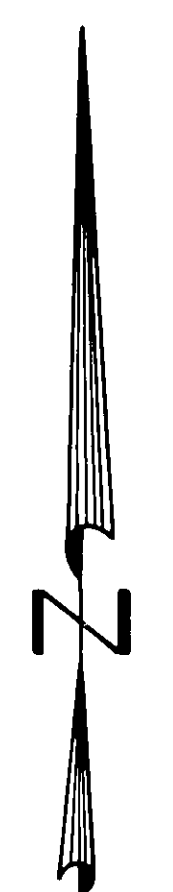


GRAND COUNTY  
Location Map

6	5	4	3	2	1
7	8	9	10	11	12
13	14	15	16	17	18
19	20	21	22	23	24
25	26	27	28	29	30
31	32	33	34	35	36

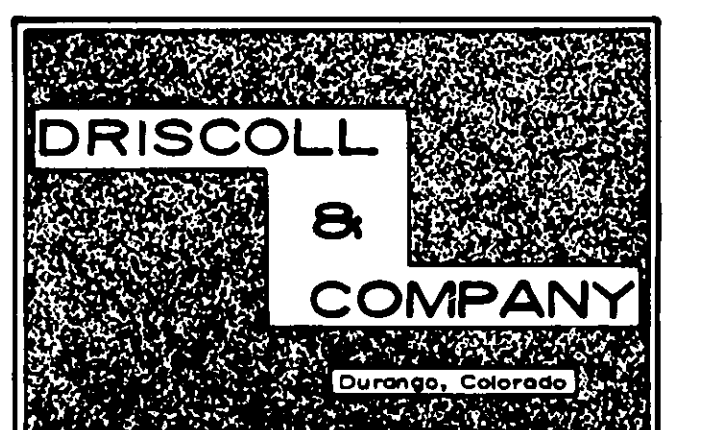
TOWNSHIP INDEX

Adjoining  
T. 2 N., R. 76 W.  
1329



Scale: 1" = 200'

WARNING:  
This map is for assessment purposes only. It is not necessarily accurate by surveying standards. Do not use for legal conveyance.

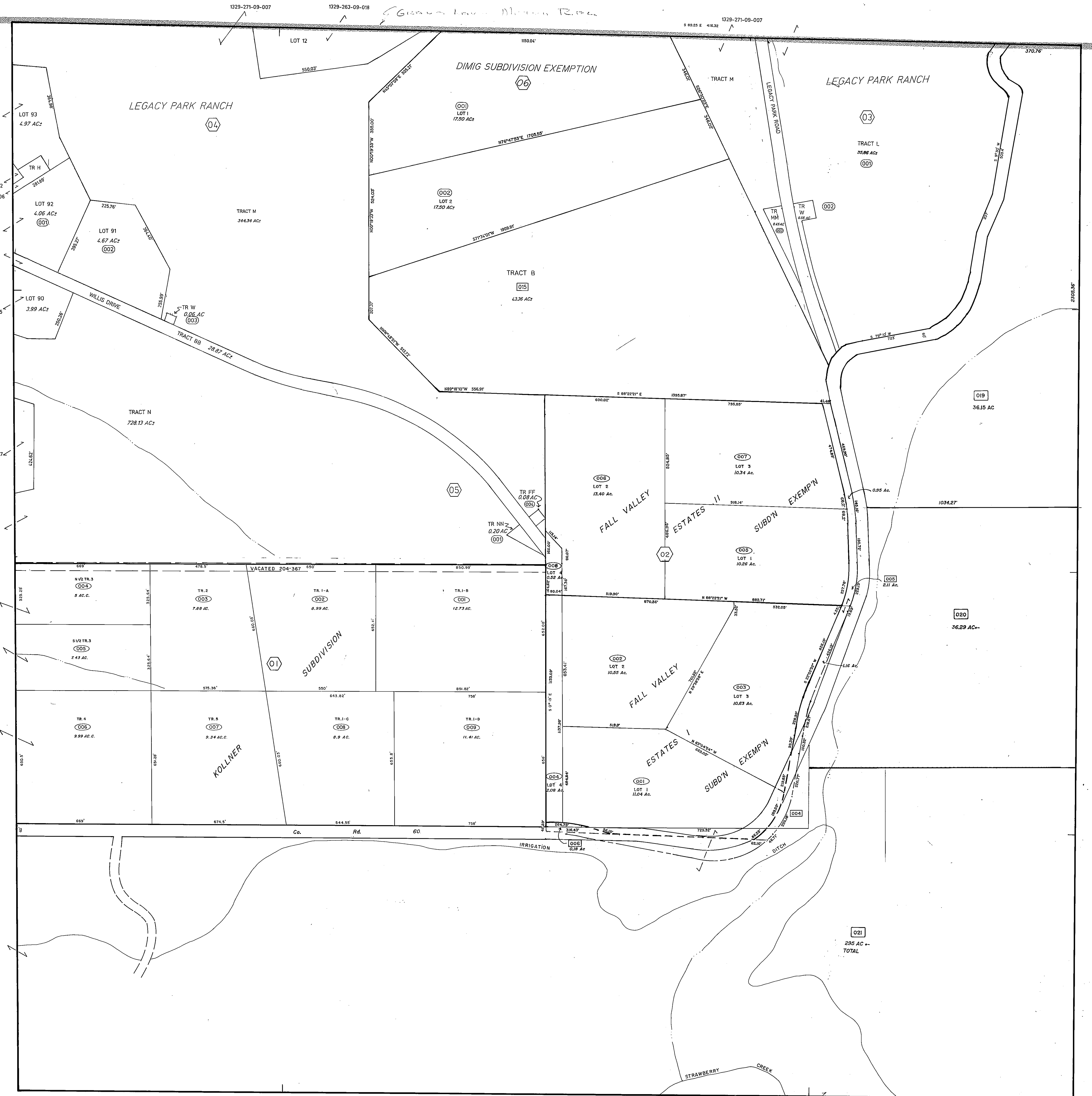


T. 2 N., R. 76 W., SEC. 35

## 1329-35

Last metes and bounds parcel number used is 007.

Adjoining  
T. 1 N., R. 76 W.  
1451



Adjoining  
T. 2 N., R. 76 W.  
SEC. 34  
1329-34