

1329-15

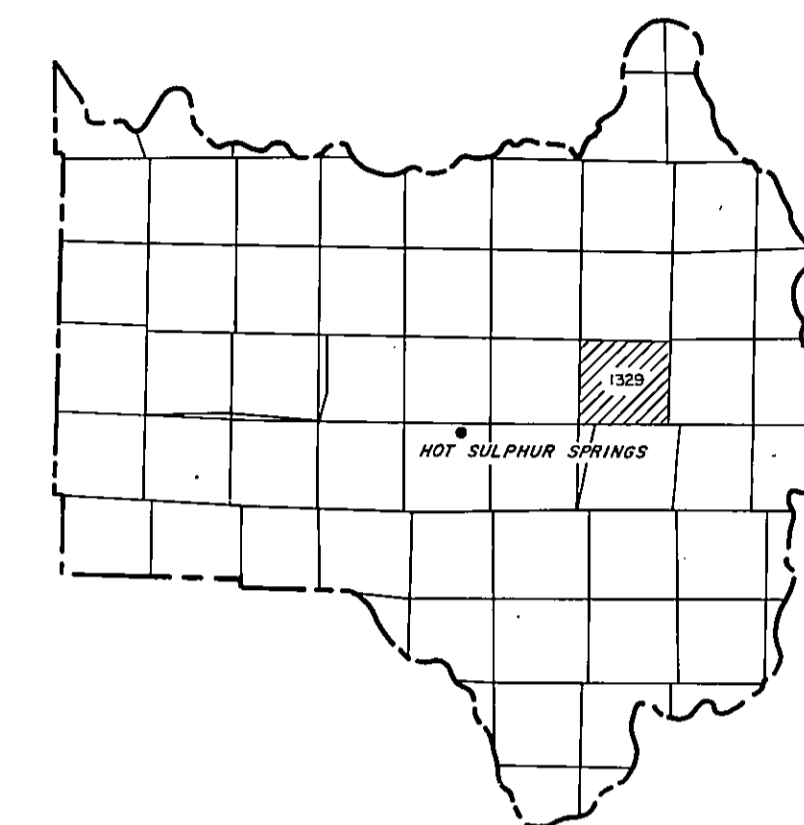
T. 2 N., R. 76 W., SEC. 15

TAX DISTRICT: 44
SCHOOL DISTRICT:

Adjoining
T. 2 N., R. 76 W.
SEC. 10
1239-10

GRAND COUNTY

DRAWN BY		DATE
CHECKED BY		DATE
REVISED		
Date	By	Remarks
5-80	Yal	FINAL SUBMITAL
11-81	RWD	FINAL SUBMITAL
2-82	DRR	Conditionally approved
9-82	DRR	Approved
11-85	DRR	update
1-97	SF	DRPATE

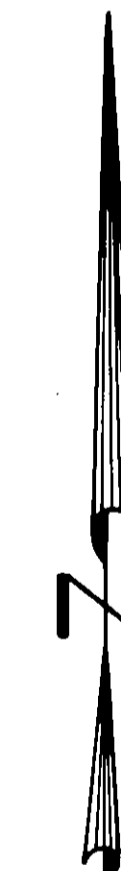


GRAND COUNTY
Location Map

6	5	4	3	2	1
7	8	9	10	11	12
13	14	15	16	17	18
19	20	21	22	23	24
25	26	27	28	29	30
31	32	33	34	35	36

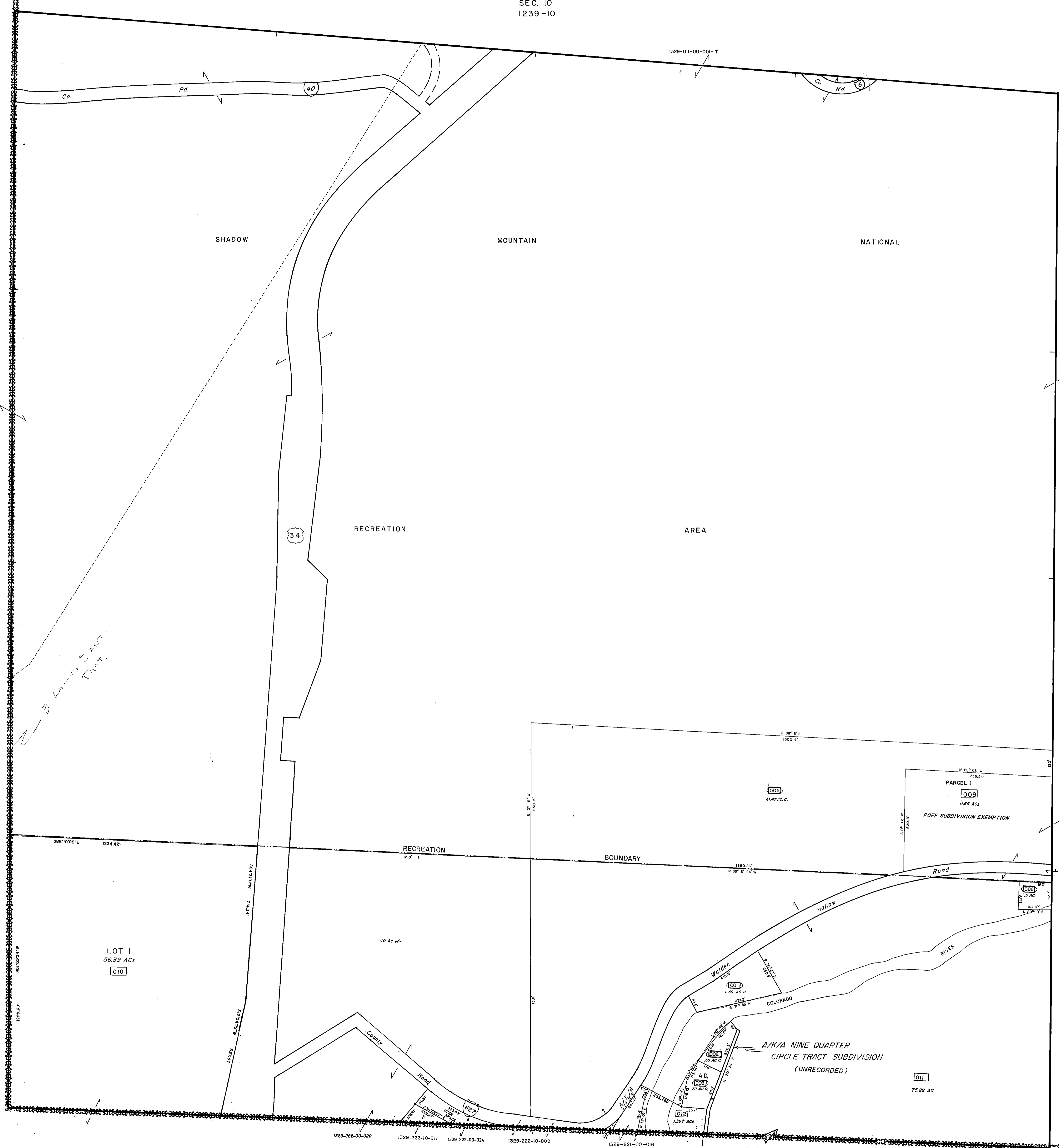
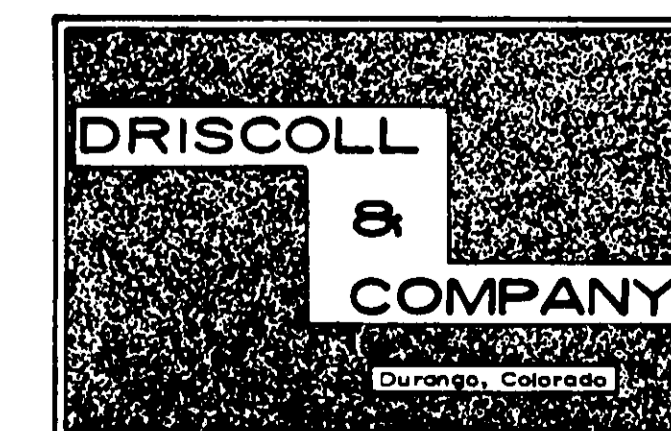
TOWNSHIP INDEX

Adjoining
T. 2 N., R. 76 W.
SEC. 14
1329-14



Scale: 1" = 200'

WARNING:
This map is for assessment purposes only. It is not necessarily accurate by surveying standards. Do not use for legal conveyance.



Adjoining
T. 2 N., R. 76 W.
1329

Adjoining
T. 2 N., R. 76 W.
SEC. 22
1329-22

T. 2 N., R. 76 W., SEC. 15

1329-15