

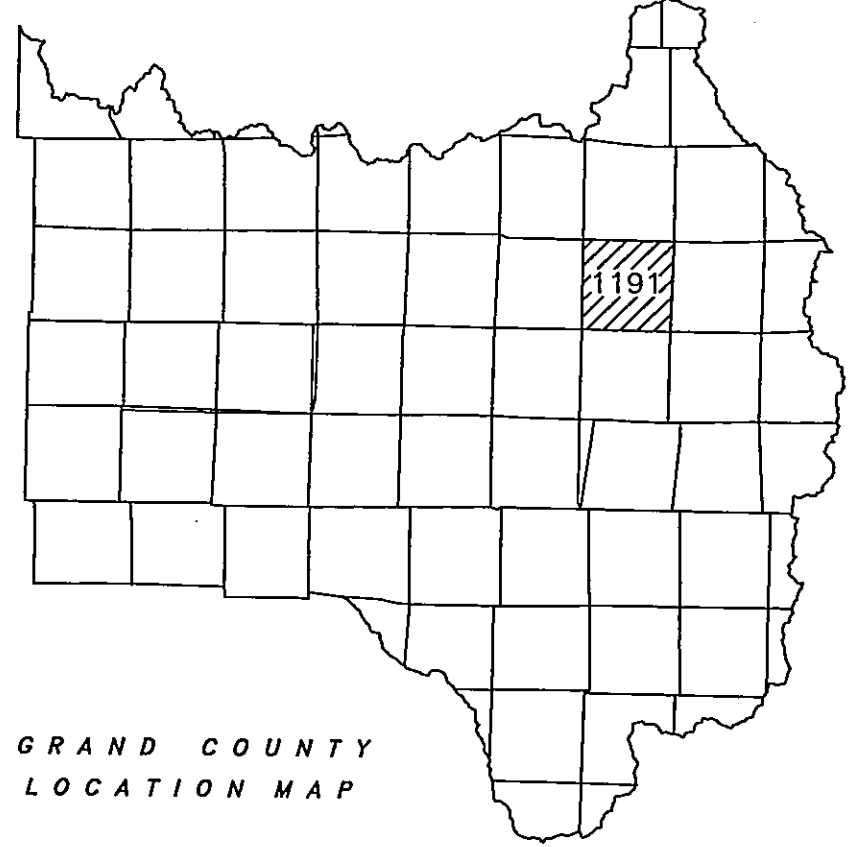
T3N, R76W
SECTION 26

1191-26

Adjoining
T3N, R76W
1191-23

GRAND
COUNTY

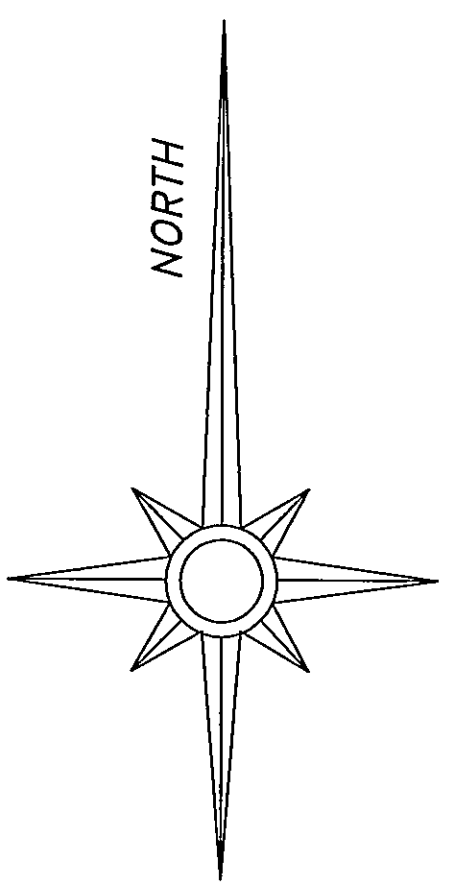
DATE	BY	REMARKS
7/13/04	HLP	FIRST AUTOCAD MAP OF 1191-26
12/27/04	HLP	SPRINT COUNTY - CLARK ADDITION
7/29/05	HLP	SPRINT COUNTY - DONNELL COMBINE
9/25/05	HLP	SPRINT COUNTY - SODA SPRINGS RANCH
1/17/06	HLP	SPRINT COUNTY - SODA SPRINGS RANCH
6/27/06	HLP	SPRINT COUNTY - SODA SPRINGS RANCH
8/7/06	HLP	SPRINT COUNTY - SODA SPRINGS RANCH
12/06	HLP	SPRINT COUNTY - SODA SPRINGS RANCH



GRAND COUNTY
LOCATION MAP

6	5	4	3	2	1
7	8	9	10	11	12
18	17	16	15	14	13
19	20	21	22	23	24
30	29	28	27	26	25
31	32	33	34	35	36

TOWNSHIP INDEX

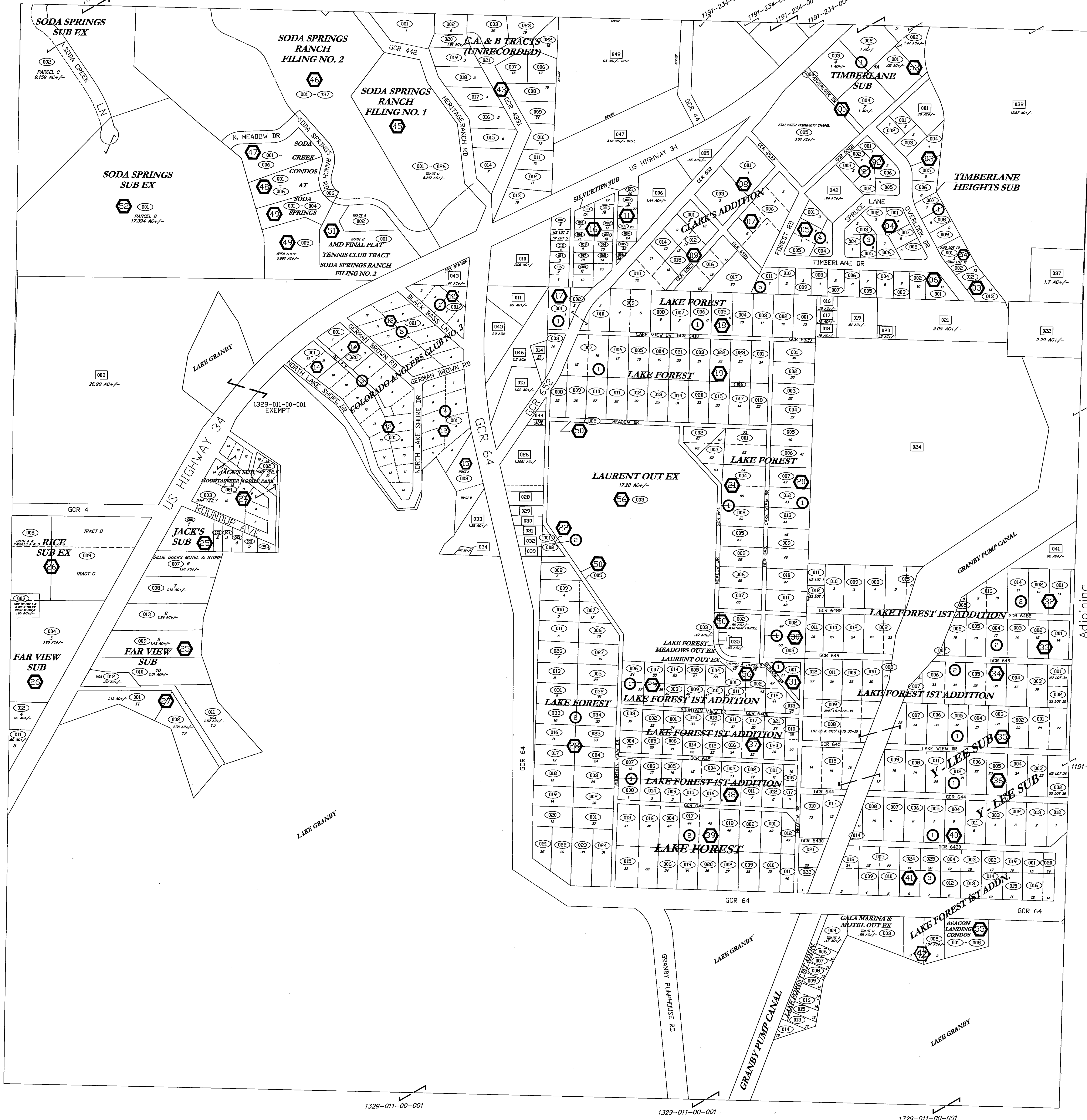


SCALE: 1" = 200

WARNING:
This map is for assessment purposes
only. It is not necessarily accurate by
surveying standards. Do Not use for legal
conveyance.

Adjoining
T3N, R76W
1191-27

Adjoining
T3N, R76W
1191-25



1329-011-00-001

1329-011-00-001

1329-011-00-001

Adjoining
T3N, R76W
1191

T3N, R76W
SECTION 26

1191-26