

GRAND COUNTY

DRAWN BY <i>[Signature]</i> DATE		
CHECKED BY _____ DATE		
REVISED		
Date	By	Remarks
7-92	JKP	Revised
11-93	JKP	11/11/93
1-97	SF	UPDATE
10-97	SF	UPDATE
6-98	Tin	UPDATE
4-99	Sm	UPDATE
1-01	JV	SET GOLD RUN PLACER SPOT-000
1-2010	JV	SP01-004
		SP08-32 JAMES WHITE

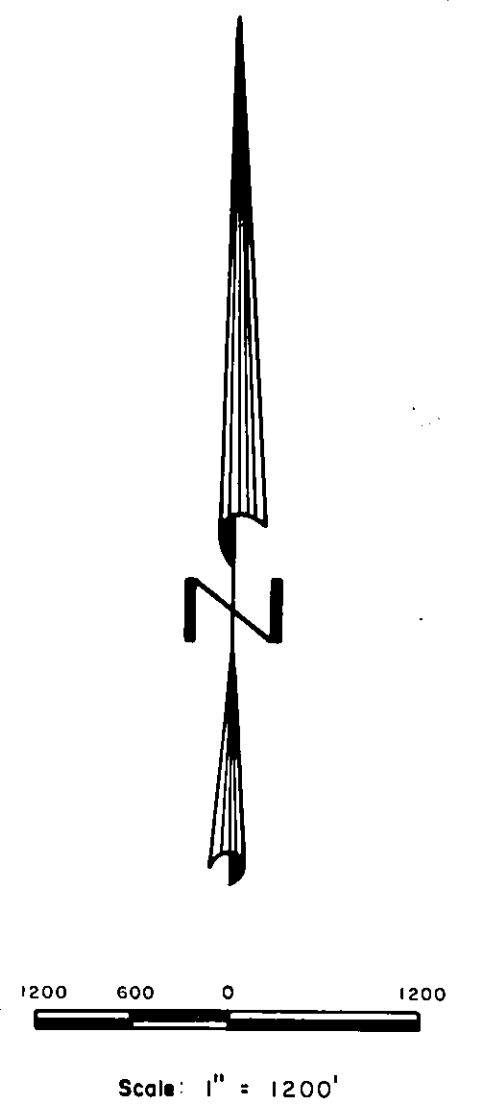


GRAND COUNTY
Location Map

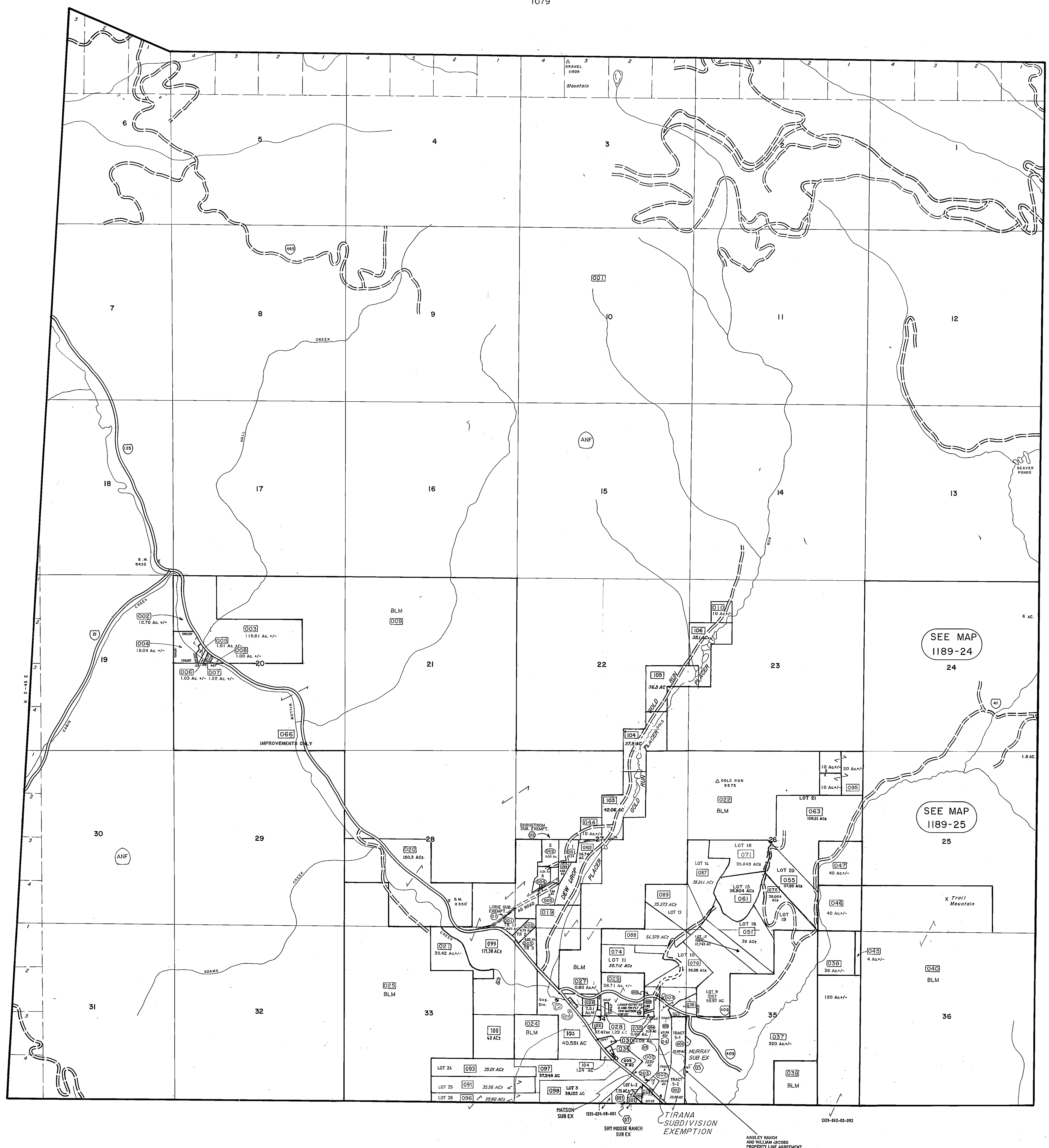
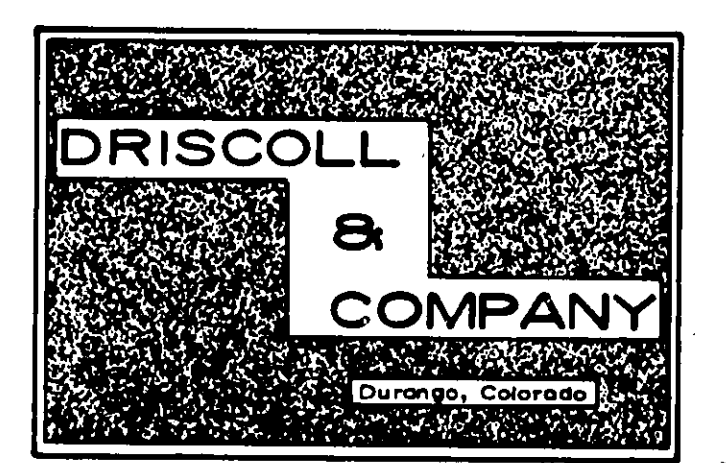
6	5	4	3	2	1
7	8	9	10	11	12
18	17	16	15	14	13
19	20	21	22	23	24
30	29	28	27	26	25
31	32	33	34	35	36

TOWNSHIP INDEX

Adjoining
T. 3 N., R. 76 W.
1191



WARNING:
This map is for assessment purposes only. It is not necessarily accurate by surveying standards. Do not use for legal conveyance.



1189
T. 3 N., R. 77 W.

Adjoining
T. 3 N., R. 78 W.
1187

Adjoining
T. 2 N., R. 77 W.
1331

T. 3 N., R. 77 W.

1189

Last metes and bounds parcel number used is 080