

1077-13

T. 4 N., R. 76 W., SEC. 13

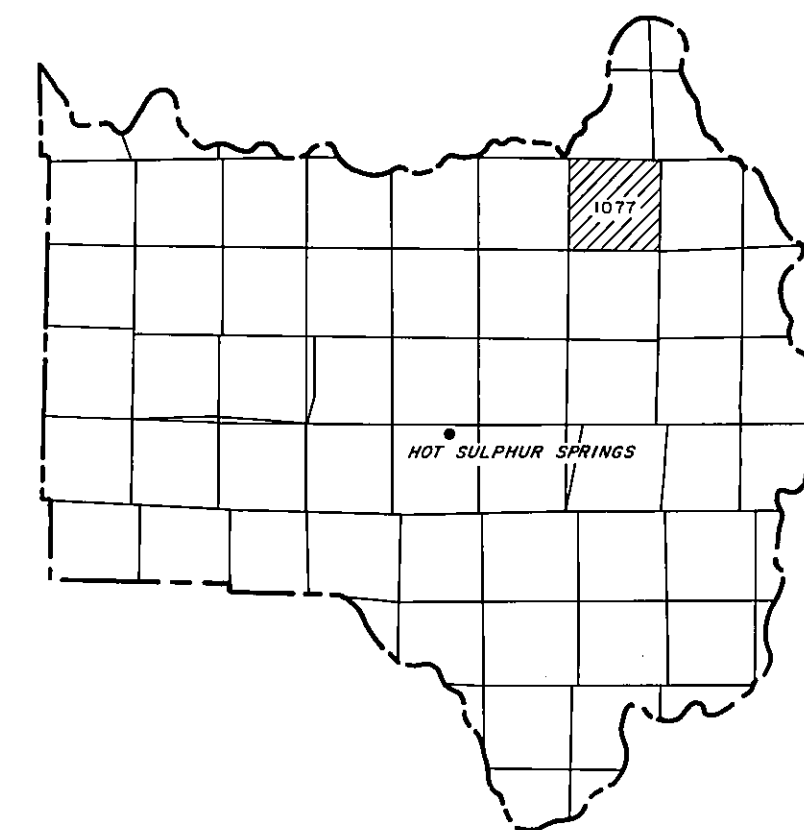
TAX DISTRICT: 56
SCHOOL DISTRICT:

Adjoining
T. 4 N., R. 76 W.
1077

1077-013-00-001-T

GRAND COUNTY

DRAWN BY		DATE
CHECKED BY		DATE
REVISED		
Date	By	Remarks
5-8-91	WJL	FINAL SUBMITTAL
5-8-91	KD	DIR. APP.
6-18-91	WJL	Rechecked
7-91	RJA	approved



GRAND COUNTY
Location Map

6	5	4	3	2	1
7	8	9	10	11	12
13	14	15	16	17	18
19	20	21	22	23	24
25	26	27	28	29	30
31	32	33	34	35	36

TOWNSHIP INDEX

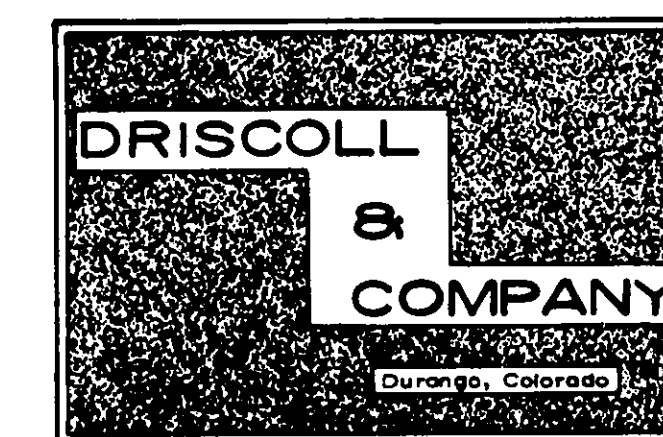
Adjoining
T. 4 N., R. 75 W.
1075



200 100 0 200

Scale: 1" = 200'

WARNING:
This map is for assessment purposes only. It is not necessarily accurate by surveying standards. Do not use for legal conveyance.



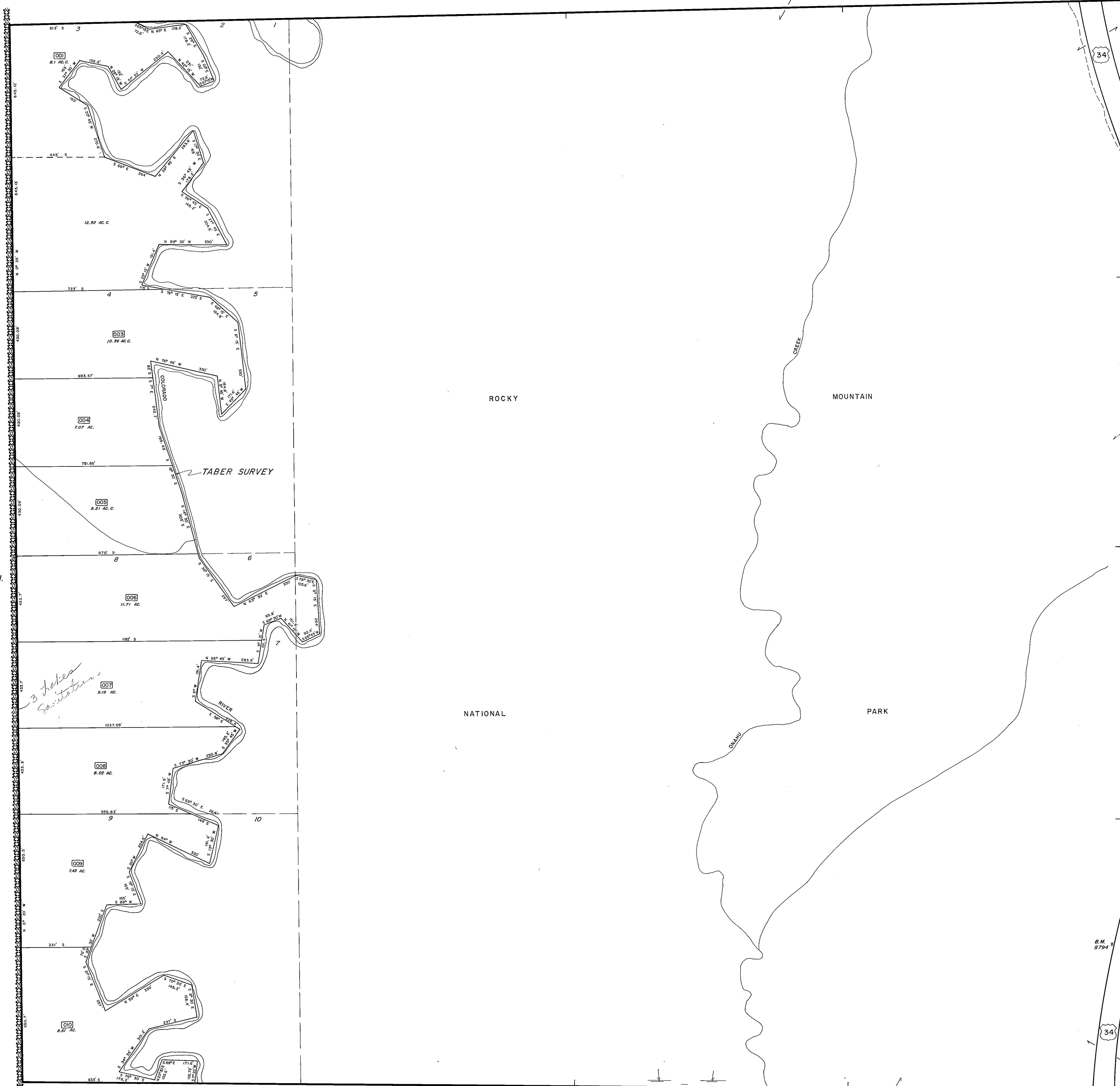
T. 4 N., R. 76 W., SEC. 13

1077-13

Last metes and bounds parcel number used is 010

Adjoining
T. 4 N., R. 76 W.
SEC. 24
1077-24

Adjoining
T. 4 N., R. 76 W.
1077



1077-013-00-001-T