

---

## F-TC Stream Reach Summary

**Study Reach:** F-TC, Tenmile Creek - Tributary to Fraser River.

**Reach Description:** Approximate channel length: 1.5 miles, approximate channel slope 0.4%.

A relatively small tributary to the Fraser River, Tenmile Creek joins the Fraser River near the Town of Granby. The downstream 1.5 miles of Tenmile Creek are flat, sinuous and supports extensive meadow wetlands.



*Tenmile Creek at confluence with Fraser River, Granby County*

### Flow Recommendations:

**Environmental Flow Methodology:** A study site was not established within this reach. CWCB instream flows have been set.

### Water Users:

- Irrigators, municipalities and industry flow-related issues: None reported
- Recreation: Angling is the predominant recreational use.

### Summary of Flows:

#### CWCB flows

- 4 cfs summer
- 2 cfs for winter

#### Water Users

- Irrigators, municipalities and industry: Upstream of the project reach there are numerous local diversions. Most of the diversions are made in the summer for irrigation and will likely have some return flows.
- Recreation: none reported

**Stream Assessments:** No additional stream assessments were conducted in this reach.

**Spawning Observations:** No spawning survey was conducted in this reach.

**Hydrologic Records:** No stream flow records were identified for this reach.

**Water Temperature:** F-TC is a Tier I stream reach as designated by CDPHE with a chronic temperature standard of 17°C MWAT and an acute temperature standard of 21.2°C DM. No temperature data are available on Ten Mile Creek.

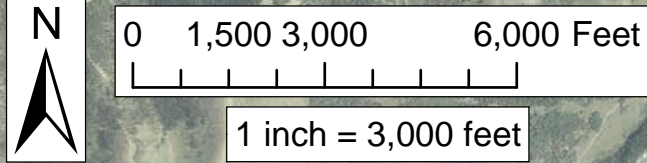
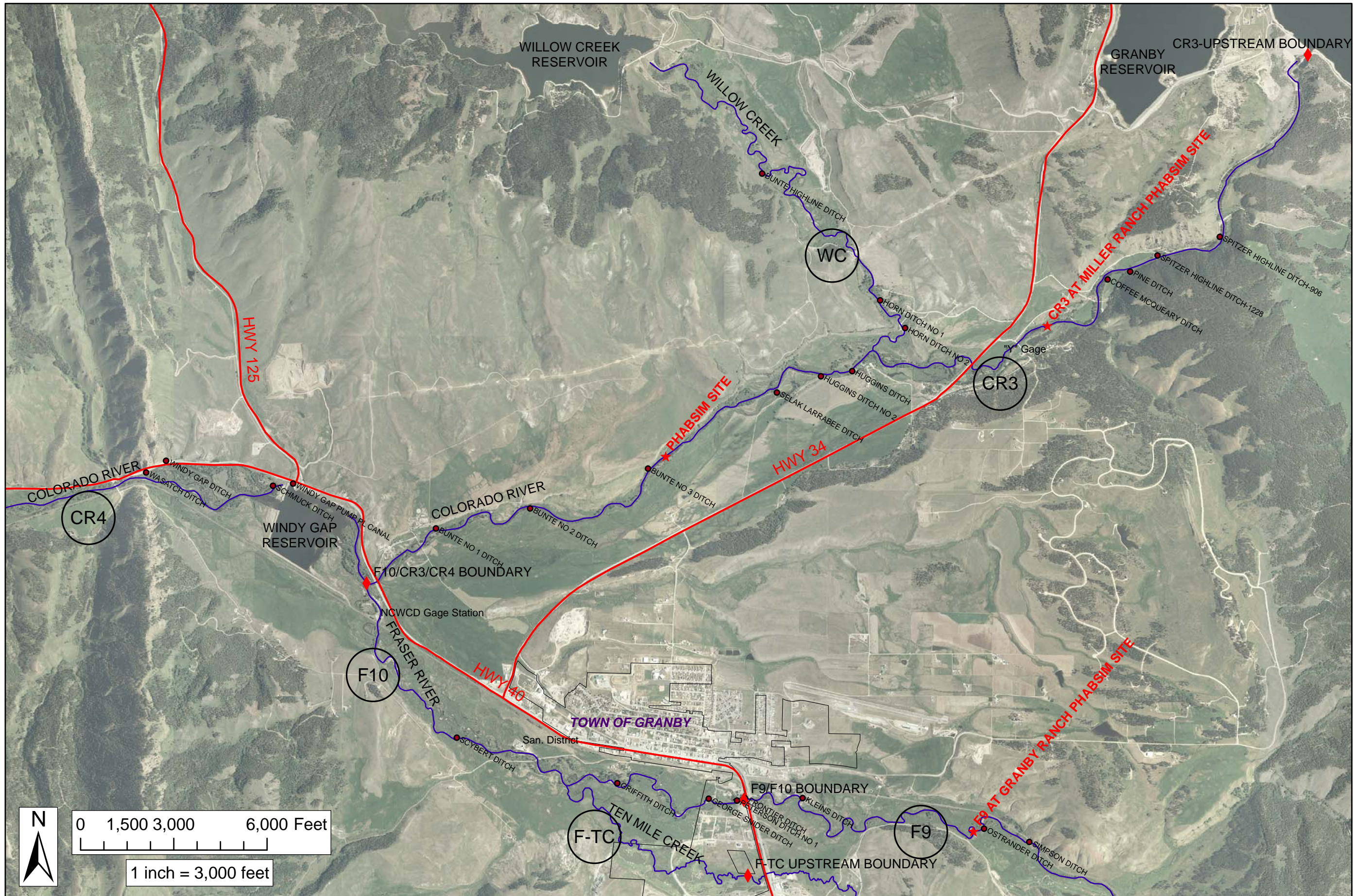
**Water Quality:** No water quality data are available on Ten Mile Creek.

**Water Supply Issues (UPCO):** No water supply issues are reported for this reach.

**Summary of Results and Additional Remarks:** There does not appear to be a need for additional studies within this reach at this time.

**Restoration Opportunities:** No recommendations are presented at this time.

**Monitoring:** No recommendations are made at this time.



GRAND COUNTY  
STREAM MANAGEMENT PLAN  
REACHES

Legend

- ◆ REACH BOUNDARY
- ★ PHABSIM SITES
- DIVERSIONS

REACH: F-TC  
SHEET # :  
1 OF 1

