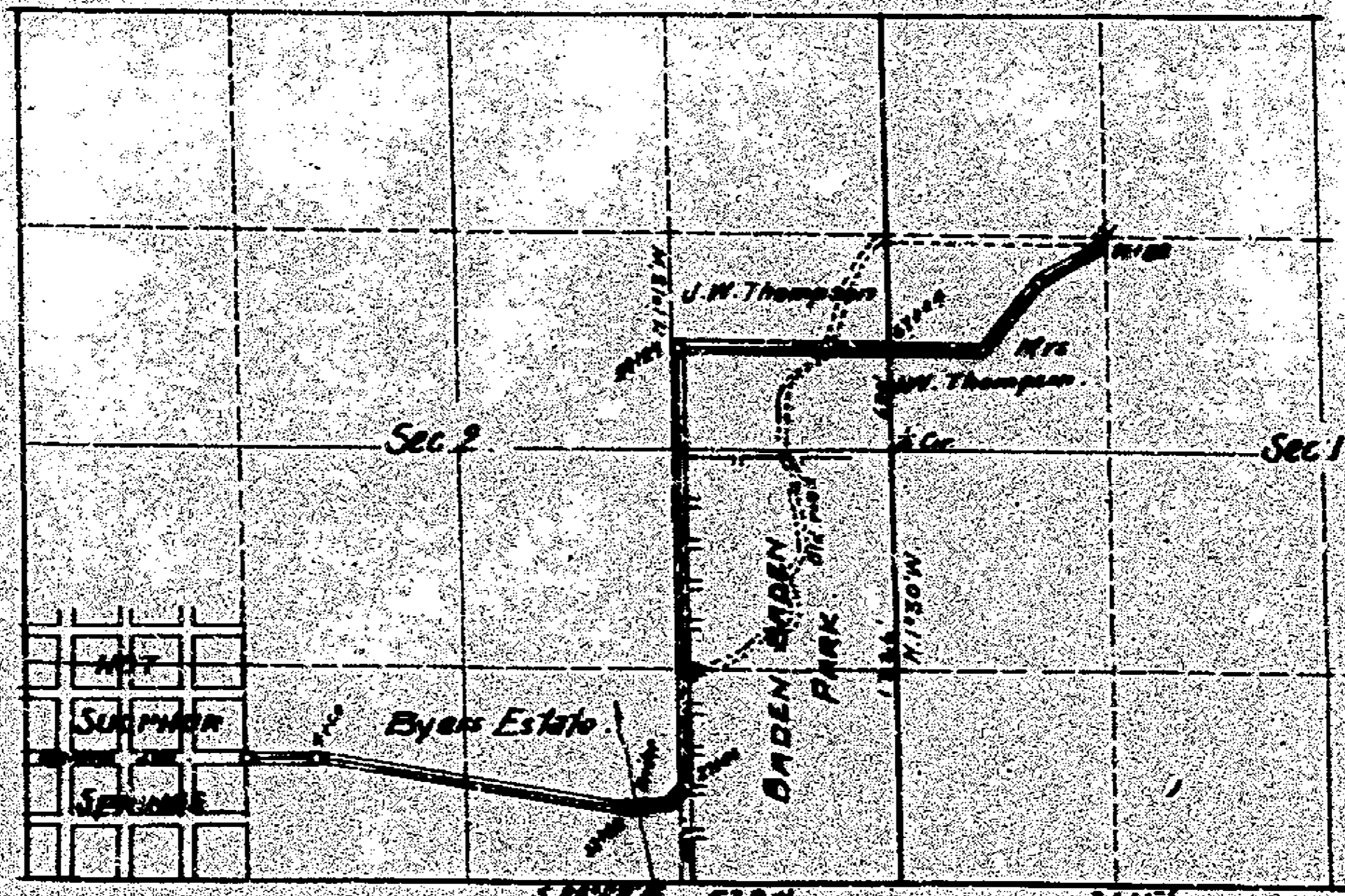


Map of
COUNTY ROAD
 through
 Sections 1 and 2 in
 T.1N.R.78W.
 of the 6th P.M.

Surveyed July 30th 1912
 by Frank I. Huntington.
 Grand Co. Sur.

Fieldnotes on page 37 of
 "book"



T.1N.R.78W. 6th P.M.

Relocated 1938
 See F.A.P. 151.6

Scale 1 inch = 1200 feet.