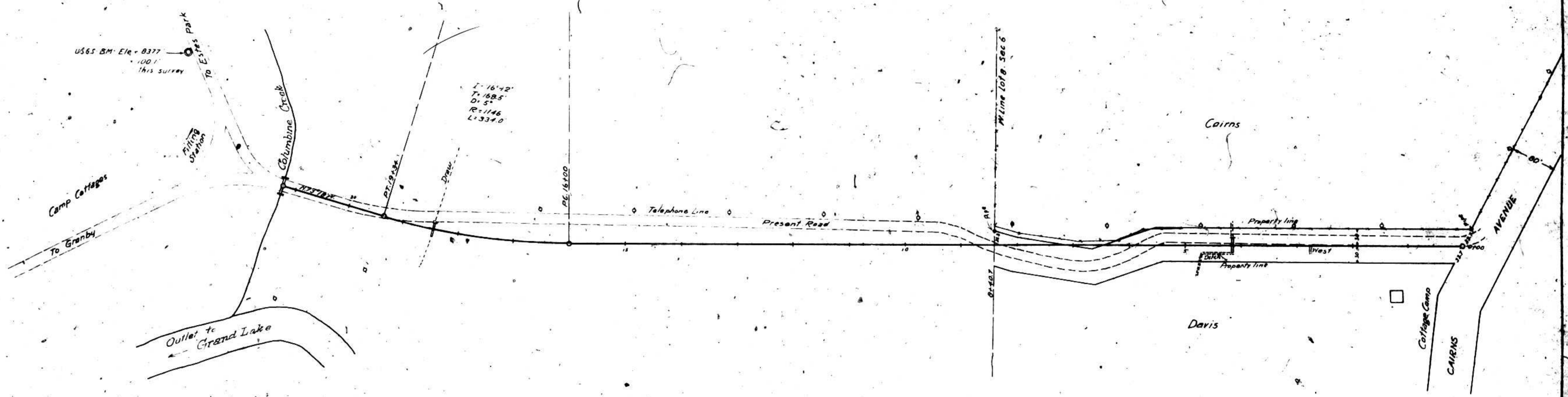
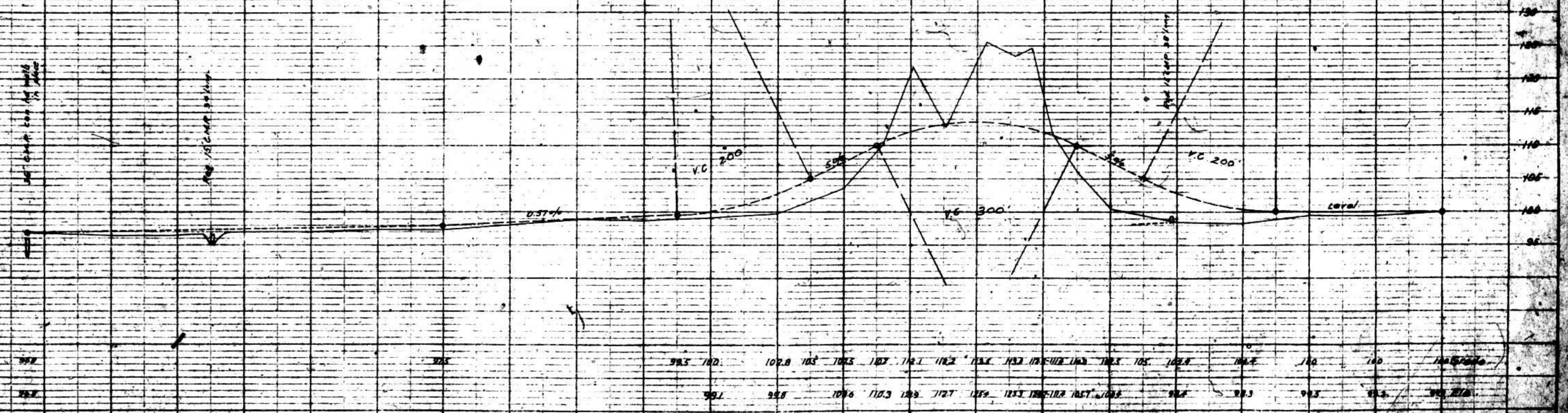


Map Of
Proposed "Twin Hill" Improvement
Grand Lake Road.



Flat Section. Borrow from sides, estimated 1025 cu. y. Gravel = 208 cu. y.

Balanced Hill Section. Excavation = 2480 cu. y. Embankment = 2520 cu. y. Borrow = 400 cu. y. Gravel = 204 cu. y.



98.5	100.	102.0	103	104.5	107	110.1	112.2	115.2	118.2	121.2	124.2	127.2	130.2	132.2	134.2	136.2	138.2	140.2	142.2	144.2	146.2	148.2	150.2	
98.1	99.8	101.6	103.3	105.0	106.7	108.4	110.1	111.8	113.5	115.2	116.9	118.6	120.3	122.0	123.7	125.4	127.1	128.8	130.5	132.2	133.9	135.6	137.3	139.0