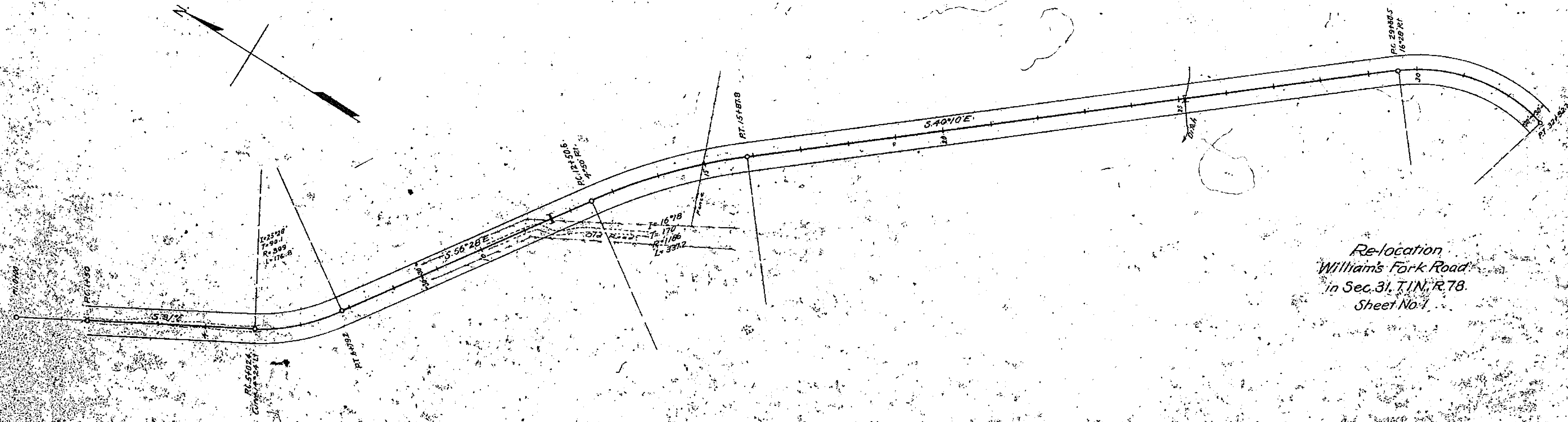


PLAN
 CHECKED BY: [Signature]
 DATE: April 1932
 DRAWN BY: [Signature]

SHEET No. 1
 PROJECT: [Illegible]

CHECKED BY: [Signature]
 DATE: [Illegible]
 DRAWN BY: [Signature]



Re-location
 William's Fork Road
 in Sec. 31, T. 1 N., R. 78.
 Sheet No. 1

